

2026 OFFICIAL TRAVEL GUIDE

MONMOUTH COUNTY

New Jersey



The
**Jersey
Shore**

...AND SO MUCH MORE



★ ★ ★ ★ ★
Celebrate
AMERICA'S
250th
WITH US!

Check ParkStage.org for new show info



FRI JUNE 19



SAT JUNE 20



JUNE 21



FRI JUNE 26



FRI JULY 3



SAT JULY 11



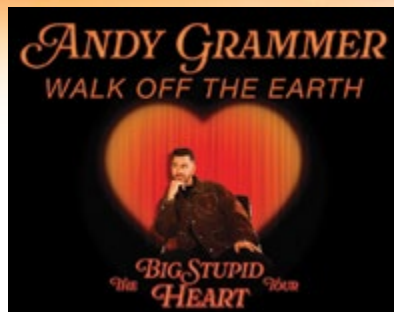
JULY 30



FRI JULY 31



SAT AUG 1



SAT AUG 22



FRI SEPT 4



The Basie Presents

ParkStage
Summer Concert Series

A collaboration between Monmouth County Tourism and the nonprofit Count Basie Center for the Arts

ParkStage.org

East Freehold Showgrounds
1500 Kozloski Rd • Freehold • NJ



GET READY | *to arrive in style* |

APPLE

PRIMARK

ZARA

LUSH

DAVE & BUSTER'S

AMC THEATRES

DICK'S HOUSE OF SPORT

JD SPORTS

THE CHEESECAKE FACTORY

L.L. BEAN

PF CHANG'S

MACY'S

POP MART

LULULEMON

BUILD-A-BEAR

SEPHORA

KURA REVOLVING SUSHI

ULTA BEAUTY

LEGO

MARMARA MEDITERRANEAN CUISINE

LADERACH SWITZERLAND

J.CREW FACTORY

JACK & JONES

DRY GOODS

+MORE

VISIT US



freehold
RACEWAY MALL



contents

A large, vibrant firework display in the night sky, with a silhouette of a couple sitting on a wooden structure in the foreground. The fireworks are golden and cascading, creating a dense, tree-like shape. The couple is seen from behind, looking out at the display. The background is dark, making the fireworks stand out prominently.

18

Beaches, Boardwalks & Marinas

26

America's 250th Anniversary

38

Parks

54

Downtowns

63

Breweries, Wineries & Distilleries

66

Arts & Culture

72

Music & Film Festivals

78

Events

82

Lighthouses

Bradley Beach, NJ

Photo Credit: John Entwistle



The 2026 Monmouth County Board of County Commissioners (left to right): Erik Anderson, Susan M. Kiley, Director Thomas A. Arnone, Deputy Director Dominick "Nick" DiRocco, and Ross F. Licitra



**2026 MONMOUTH COUNTY
BOARD OF COUNTY
COMMISSIONERS**

Dear Friend,

On behalf of the Monmouth County Board of County Commissioners, it is my pleasure to welcome you to Monmouth County! As a true family-friendly destination, Monmouth County is a wonderful place to live, work, and visit. Known for our beautiful beaches, expansive parks, vibrant downtowns and shopping, exciting nightlife, and incredible food and drink scene, every visit offers something new, memorable, and fun.

Whether you are planning a relaxing weekend getaway, a family vacation, or a day trip, you will find something for everyone here in Monmouth County. Easily accessible by car, train, bus, boat, or air, the 53 municipalities that make up our County are ready to welcome you with diverse attractions and year-round events. Monmouth County is conveniently located about an hour from both New York City and Philadelphia, making it an ideal place for planning day trips.

Our beautiful beaches and boardwalks provide fun for the entire family. Swimming, shelling, surfing, paddle boarding, and sandcastle building along the Atlantic Ocean create a seaside playground for visitors of all ages. From walks along the boardwalk to bay-front carousel rides, our coastline offers unforgettable experiences.

Visitors are also encouraged to explore the Monmouth County Park System, which has achieved national accreditation among park and recreation agencies. With more than 30 parks and over 148 miles of trails, our Park System offers endless opportunities for outdoor recreation, nature exploration, and relaxation. Golf enthusiasts can enjoy several scenic public courses located throughout the County, offering an enjoyable experience for players of all skill levels.

For lovers of arts, culture, and history, Monmouth County offers rich and fascinating opportunities. Explore the local art galleries, museums, and live theater performances, or the remarkable historic sites that date back to the American Revolution. Be sure to see our three lighthouses, including one that proudly stands as the oldest working lighthouse in the United States and another that was featured in a star-studded movie.

This year promises to be an especially exciting time to visit Monmouth County as we join communities across the nation in celebrating America's 250th Anniversary. The County will host special commemorations, events, and programs honoring our nation's history and the important role our region played in it. Visitors can learn more about these celebrations at MonmouthNJ250.org and page 26 of this Guide.

Food, shopping, and entertainment are also at the heart of the Monmouth County experience. Spend the day browsing our charming downtowns and boutiques, then enjoy dinner at one of our award-winning restaurants, where many ingredients are sourced from local farms right here in the County. Cap off the evening by touring a local brewery, winery or distillery, catching a live performance, or enjoying music at one of our many indoor and outdoor venues. In addition, the global excitement of the FIFA® World Cup will be felt right here in Monmouth County, with local watch parties, community gatherings, and special events planned throughout the area, giving visitors even more reasons to join in the fun.

To learn more or begin planning your visit, please explore the Monmouth County Tourism website at MonmouthCountyTourism.com and follow us on social media by searching "Monmouth County Tourism." We invite you to discover and enjoy everything our County has to offer and see for yourself why Monmouth County truly is "*The Place You Want to Be!*"

Looking forward to seeing you soon!



THOMAS A. ARNONE
Commissioner Director
Tourism Liaison

2026 OFFICIAL TRAVEL GUIDE

MONMOUTH COUNTY

New Jersey

The 2026 Monmouth County Board of County Commissioners

Thomas A. Arnone, Director
Dominick "Nick" DiRocco, Deputy Director
Susan M. Kiley
Ross F. Licitra
Erik Anderson

Monmouth County Tourism

Carolyn Burtnick
Melanie Kushwara
Darlene Di Leo

Produced by RCR, Inc., in coordination with Monmouth County Tourism

1 East Main Street, Freehold, NJ 07728
800-523-2587
MonmouthCountyTourism.com

Publisher

RCR, Inc. Marketing Firm
732-272-5044
cpadilla@rcrmarketingfirm.com

Advertising

Cathy Padilla

Graphic Design

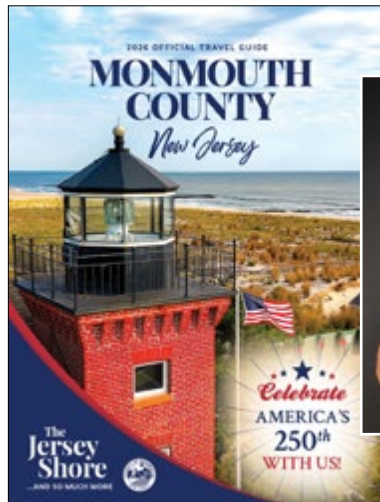
Lori Donnelly



Supported in part by a grant from NJ Department of State, Division of Travel & Tourism

All rights reserved. No portion of this publication may be copied or reprinted without written permission. Monmouth County, RCR, Inc., and the advertisers are not responsible for any errors or omissions in this guide. This guide was created for your convenience. Inclusion in the guide does not constitute endorsement or recommendation of any of the activities, events, venues, or businesses by Monmouth County and RCR, Inc.. Please share and recycle printed copies.

Cover Contest Winner



Gary Gellman founded Gellman Images more than 36 years ago to provide video production, professional photography and creative marketing services throughout the Tri-State region. He has traveled nationwide to capture images of Fortune 500 companies, celebrities, professional athletes, ambassadors, governors and U.S. presidents. Highlights include photographing two popes - Pope Francis in Philadelphia and Pope Leo XIV at The Vatican during a private mass.

Gary Gellman has been featured nationally more than 500 times in newspapers, magazines and on radio and has appeared on CBS's "The Early Show", ABC's "Good Morning Las Vegas", CBS's "Early Show Indianapolis", Fox's "Good Day Philadelphia", Action News' "Early Edition", NBC's "10" and News 12's "Daytime Edition".

For more than 17 years, Gellman Images has been the chosen official photographer for the New Jersey Hall of Fame annual induction ceremony and during that time Gary has photographed some of New Jersey's greats including Bruce Springsteen, Jon Bon Jovi, Yogi Berra, Buzz Aldrin, Queen Latifah, Mary Higgins Clark and many more.

Gellman Images has created world-class media for clients in a wide array of fields and interests - small businesses, large corporations, government, political campaigns, real estate, non-profits, trade associations, education, utilities, healthcare, banking, accounting, journalism, athletics, advocacy and beyond.

"None of this would have been accomplished without the hard work, dedication and commitment of the Gellman Images team which includes Nick Hiltwein, Alana Denenberg and Kerriane Gellman," said Gary Gellman from his office in Spring Lake Heights, N.J. "We have the hardest working team in the region and we are always reinventing our craft."

Gary Gellman began his photographic career at the age of 16 working at a public access cable television station in New Jersey and since that time he has been a featured speaker at conventions in Las Vegas, Philadelphia, Stamford, East Rutherford, and Atlantic City. His work is featured at the N.J. State Museum, the U.S. Senate Gallery, the Rock and Roll Museum and The Vatican.

Gellman is a proud graduate of The College of New Jersey, Ewing, N.J. and a Howell, NJ resident.

COVER PHOTO LOCATION: SEA GIRL, N.J.

 **Bell Works**

Welcome to the

**metro
burb.**

(Noun) / metroburb/

An urban hub.

A metropolis in suburbia.

**work
eat
move
learn
play
shop
care**



Stay Connected

www.bell.works

@bellworks



Open to the public

101 Crawfords Corner Rd,
Holmdel, NJ 07733

A Year-Round Destination

Embrace Every Season in Monmouth County



Monmouth County is a four-season destination offering something for everyone. From vibrant festivals to cherished local traditions, each season unfolds with its own unique charm and allure.

The year begins with a bang of dazzling fireworks at Pier Village and lively celebrations. Spring breathes life into the County with a sea of green at the annual St. Patrick's Day parades in Belmar, Asbury Park, Rumson, Freehold, Highlands, Keyport, Keansburg, and Matawan; accompanied by a calendar brimming with events and the opportunity to harvest your own bounty at local farms.

Summer follows, setting the scene for endless days of sun-kissed adventures and evenings filled with seaside fun. Whether it's the thundering hooves of thoroughbreds at Monmouth Park, electrifying performances at the PNC Bank Arts Center, Count Basie's Hackensack Meridian Health Theatre, and

the Stone Pony's Summer Stage, or the tantalizing aromas of seafood festivals, the sound of ocean waves or gently lapping bays are never far.

As the landscape transforms into a rainbow of autumn hues, savor crisp apple ciders and visit local farms, tee off at one of the County's scenic golf courses, or wander in one of the sprawling parks throughout the County.

With the onset of winter, our downtowns come alive with the enchantment of holiday festivities, even the joyous arrival of Santa Claus himself.

Regardless of the season, Monmouth County eagerly awaits your arrival, ready to extend a warm embrace and create lasting memories to cherish.

Live the **BEACH LIFE**



Visit Bradley Beach

Pristine beaches, a vibrant downtown, arts and culture, award winning restaurants, outdoor events and family fun!

SCAN ME



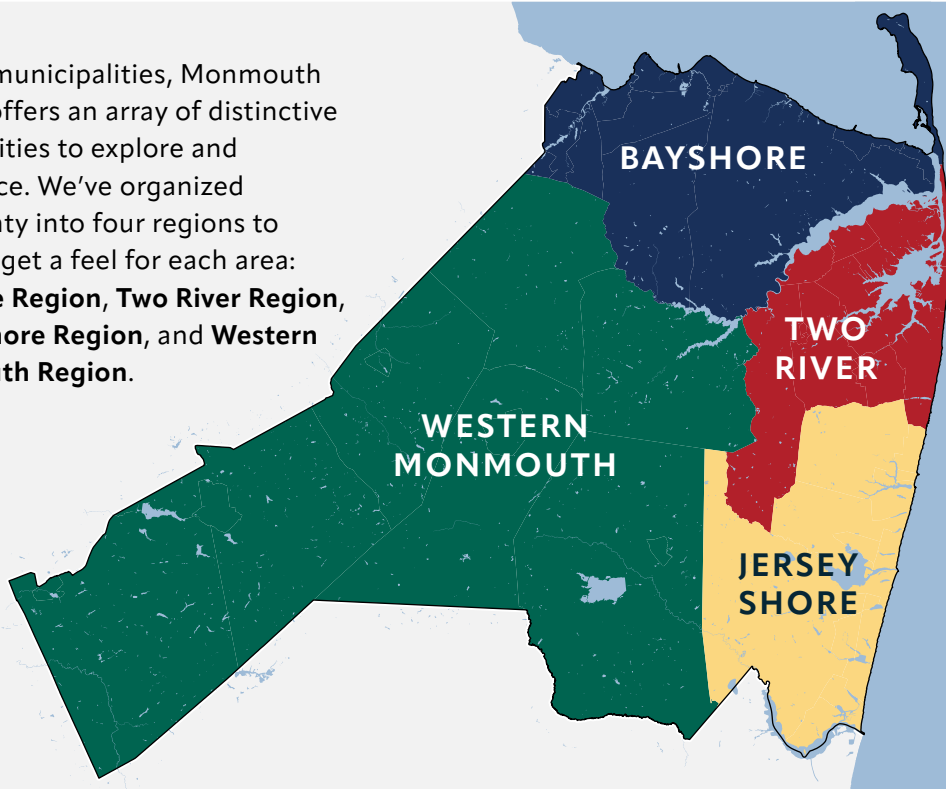
WWW.BRADLEYBEACHNJ.GOV

tourism@bradleybeachnj.gov

Four Regions

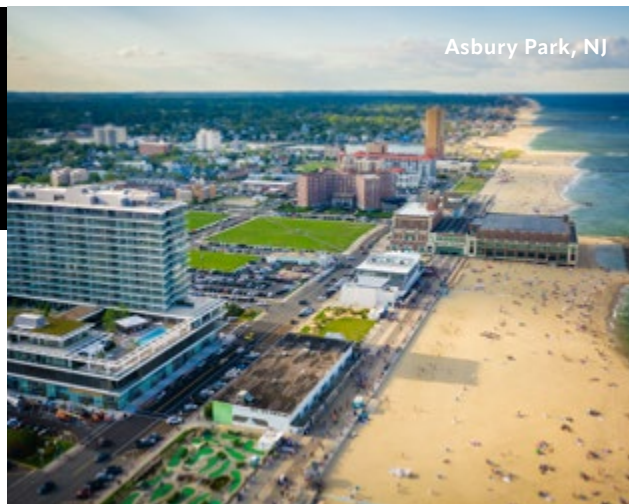
ONE MONMOUTH

With 53 municipalities, Monmouth County offers an array of distinctive communities to explore and experience. We've organized the County into four regions to help you get a feel for each area: **Bayshore Region, Two River Region, Jersey Shore Region, and Western Monmouth Region.**



Jersey Shore Region

So much more than just amazing beaches, the Jersey Shore Region offers world-famous beach towns, historic parks, lighthouses, and unforgettable entertainment venues. Home to the downtowns of Asbury Park, Belmar, Bradley Beach, Ocean Grove, Manasquan, and Spring Lake, there are endless possibilities to explore and enjoy.



Bayshore Region

At the northern tip of the County, this region is home to the Raritan Bay and Sandy Hook Bay. Gateway National Recreation Area at Sandy Hook is one of many examples of the beaches, parks, marinas, boardwalks, landmarks, and historic sites you'll discover all along this shoreline. The downtowns of Keyport, Highlands, Atlantic Highlands, and more offer all the wonderful attractions you'd expect in the Bayshore, from garden walks to outside seating on the water, to film festivals run by award-winning directors and producers.



Keyport, NJ



Red Bank, NJ

Two River Region

Bordered by the Atlantic Ocean to the east, this region takes its name from the two rivers that call it home – the Navesink and Shrewsbury rivers. Home to the downtown of Red Bank, with quaint shopping in many towns like Shrewsbury, Fair Haven, and Little Silver, this region offers a wealth of dining, theater, and golf. Sea Bright, Monmouth Beach, Long Branch, and Seven Presidents Oceanfront Park provide miles of sand and beaches, boardwalks, and waterfront memories.

Western Monmouth Region

Horse farms, golf courses, County parks, creeks and lakes dot this tranquil region rich with beauty and history. Monmouth Battlefield State Park invites visitors to one of the County's most significant historical locations, while the downtowns of Freehold and Allentown offer walkable Main Streets with shops, restaurants, and places to relax. With a constant list of exciting events and festivals, the Western Monmouth Region has it all.



Colts Neck, NJ

MONMOUTH COUNTY MUNICIPALITIES

Township of Aberdeen

732-583-4200
aberdeennj.org

Borough of Allenhurst

732-531-2757
allenhurstnj.org

Borough of Allentown

609-259-3151
allentownboronj.com

City of Asbury Park

732-775-2100
cityofasburypark.com

Borough of Atlantic Highlands

732-291-1444
ahnj.com

Borough of Avon-by-the-Sea

732-502-4510
avonbytheseanmj.com

Borough of Belmar

732-681-3700
belmar.com

Borough of Bradley Beach

732-776-2999
bradleybeachnj.gov

Borough of Brielle

732-528-6600
briellenj.gov

Township of Colts Neck

732-462-5470
coltsneck.org

Borough of Deal

732-531-1454
dealnj.gov

Borough of Eatontown

732-389-7600
eatontownnj.com

Borough of Englishtown

732-446-9235
englishtownnj.com

Borough of Fair Haven

732-747-0241
fairhavennj.org

Borough of Farmingdale

732-938-4077
farmingdaleborough.org

Borough of Freehold

732-462-4200
freeholdboroughnj.gov

Township of Freehold

732-294-2000
twp.freehold.nj.us

Township of Hazlet

732-264-1700
hazlettp.org

Borough of Highlands

732-872-1224
highlandsnj.gov

Township of Holmdel

732-946-2820
holmdeltownship.com

Township of Howell

732-938-4500
twp.howell.nj.us

Borough of Interlaken

732-531-7405
interlakenboro.com

Borough of Keansburg

732-787-0215
keansburgnj.gov

Borough of Keyport

732-739-3900
keyportonline.com

Borough of Lake Como

732-681-3232
lakecomonj.org

Borough of Little Silver

732-842-2400
littlesilvernj.gov

Village of Loch Arbour

732-531-4740
locharbournj.us

City of Long Branch

732-222-7000
longbranch.org

Township of Manalapan

732-446-3200
mntnj.org

Borough of Manasquan

732-223-0544
manasquan-nj.gov

Township of Marlboro

732-536-0200
marlboro-nj.gov

Borough of Matawan

732-566-3898
matawanborough.com

Township of Middletown

732-615-2000
middletownnj.org

Township of Millstone

732-446-4249
millstonenj.gov

Borough of Monmouth Beach

732-229-2204
monmouthbeach.org

Borough of Neptune City

732-776-7224
neptunecitynj.com

Township of Neptune

732-988-5200
neptunetownship.org

Township of Ocean

732-531-5000
oceantwp.org

Borough of Oceanport

732-222-8221
oceanportboro.com

Borough of Red Bank

732-530-2777
redbanknj.org

Borough of Roosevelt

609-448-0539
rooseveltnj.us

Borough of Rumson

732-842-3300
rumsonnj.gov

Borough of Sea Bright

732-842-0099
seabrightnj.org

Borough of Sea Girt

732-449-9433
seagirt-nj.gov

Borough of Shrewsbury

732-741-4200
shrewsburyboro.com

Township of Shrewsbury

732-542-0572
townshipofshrewsbury.com

Borough of Spring Lake

732-449-0800
springlakeboro.org

Borough of Spring Lake Heights

732-449-3500
springlakehts.com

Borough of Tinton Falls

732-542-3400
tintonfalls.com

Borough of Union Beach

732-264-2277
unionbeachnj.gov

Township of Upper Freehold

609-758-7738
uftnj.com

Township of Wall

732-449-8444
wallnj.com

Borough of West Long Branch

732-229-1756
westlongbranch.org

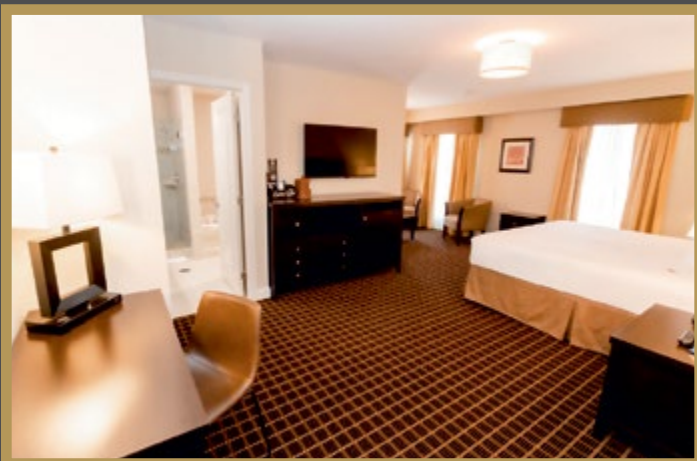


THE AMERICAN
HOTEL

**A Landmark
Boutique Hotel
and
Banquet Venue**



*Beautiful Banquet Facilities
and Meeting Rooms*



*Our Modern Appointed
Hotel Rooms*

For reservations and inquiries:

732.431.3220

18-20 East Main Street • Freehold, NJ 07728

GREAT RESTAURANTS NJ
— Hospitality Group —



For details visit us at: greatrestaurantsnj.com

CHAMBERS OF COMMERCE & TOURISM COMMISSIONS

Contacting the local chambers of commerce and visitor centers can be your gateway to unlocking a wealth of invaluable insights when embarking on your journey to explore a specific area in Monmouth County, New Jersey. These organizations serve as the heartbeat of the communities they serve, possessing an intimate knowledge of the area's hidden gems, cultural nuances, and must-see attractions. Not sure on where to start, contact Monmouth County Tourism at 800-523-2587 or visit MonmouthCountyTourism.com today! We promise to enhance your journey, enabling you to uncover any Monmouth County destination with unparalleled authenticity and ease.

Allentown Business Community Association
allentownnj.com

Asbury Park Chamber of Commerce
asburyparkchamber.com

Atlantic Highlands Chamber of Commerce
ahchamber.org

Belmar Lake Como Chamber of Commerce
belmarlakecomochamber.com

Belmar Tourism Commission
belmar.com

Bradley Beach Business Community Alliance
bradleybeachalliance.org

Bradley Beach Tourism Commission
bradleybeachnj.gov

Brielle Chamber of Commerce
briellechamber.com

Colts Neck Business Association
coltsneckbusiness.org

Downtown Freehold
downtownfreehold.com

Eastern Monmouth Area Chamber of Commerce
emacc.org

Fair Haven Business Association
fairhavenbusiness.com

Greater Long Branch Chamber of Commerce
longbranchchamber.org

Greater Ocean Township Chamber of Commerce
gotcc.org

Greater Spring Lake Chamber of Commerce
springlakechamber.org

Highlands Business Partnership
highlandsnj.com

Howell Chamber of Commerce
howellchamber.com

Jersey Shore Chamber of Commerce
jerseyshorechambernj.com

Keyport Bayfront Business Cooperative
visitkeyport.org

Lake Como Tourism Commission
lakecomonj.org

Manalapan Business Association
mtnjmba.org

Manasquan Chamber of Commerce
manasquanchamber.org

Manasquan Tourism Commission
manasquan-nj.gov

Matawan-Aberdeen Chamber of Commerce
macocnj.com

Monmouth-Ocean Development Council
modc.com

Monmouth Regional Chamber of Commerce
monmouthregionalchamber.com

Neptune Tourism Commission
neptunetownship.org

Ocean Grove Area Chamber of Commerce
oceangrovenj.com

Red Bank RiverCenter & Visitors Center
redbank.org

Spring Lake Business Improvement District
visitspringlake.com

Shop

Dine

Discover

Explore

Downtown Freehold is a nucleus for year-long activities and enjoyment. There is something for everyone from early spring until the winter holidays. Check out what's "Goin' On" by visiting our website.



**DOWNTOWN
FREEHOLD.COM**

www.DowntownFreehold.com
732-333-0094

OCEAN GROVE
AREA
CHAMBER OF COMMERCE

2026 EVENTS CALENDAR

**Spring Fashion
Show**

April 19

**Spring Fling
Arts & Crafts Show**

May 2

Spring Market

May 30

**Summer Stroll
Art Show**

July 18

Fall Market

September 12

**British Car
Show**
September 26

**Fall Harvest
Festival
Arts & Crafts Show**
October 10

**Halloween
Event**
October 24

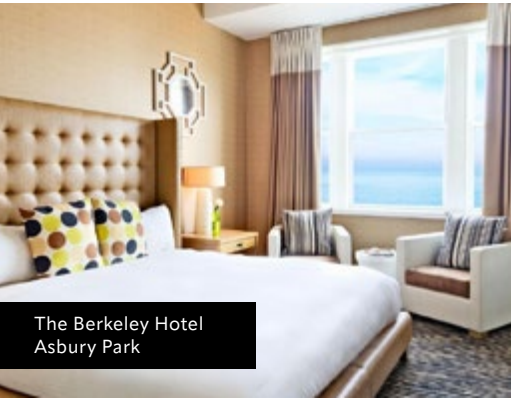
**Small Business
Saturday**
November 28

**Holiday House
Tour**
December 5

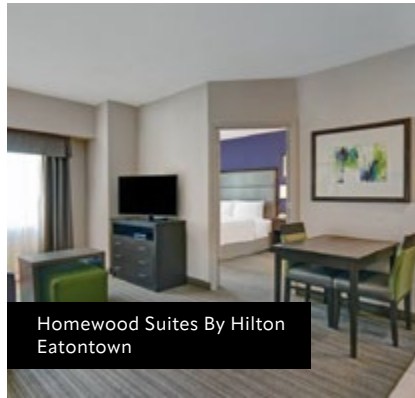
OCEANGROVENJ.COM - info@oceangrovechamber.org - 732-774-1391 -  /oceangrovechamber



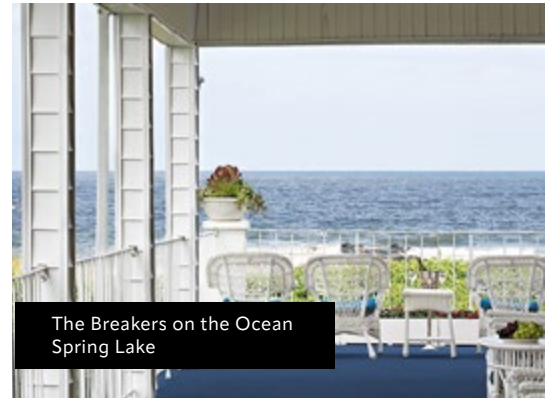
The St. Laurent Social Club
Asbury Park



The Berkeley Hotel
Asbury Park



Homewood Suites By Hilton
Eatontown



The Breakers on the Ocean
Spring Lake

Sensational Stays & Unparalleled Celebrations



The Asbury Hotel,
Asbury Park

Monmouth County is a memorable place, and our goal is to help you create memories that will last you a lifetime. Whether you're here for a leisurely escape, a brief respite, or orchestrating a milestone event like a wedding, family reunion, or corporate gathering, our aim is to ensure your experience is nothing short of extraordinary.

Your choices are nearly endless in terms of wonderful options. Cozy bed-and-breakfast inns, boutique or sophisticated resort-style hotels, nature-rich campgrounds and RV parks, condos and extended-stay rentals, and a plethora of nationally branded hotels and motels are at your disposal. Indulge in rejuvenating spa visits, savor delectable cuisines, long walks in the sand, being close to the action, or simply revel in the serenity of our natural landscapes. Whatever your preferences — check in and enjoy.



Asbury Ocean Club
Asbury Park



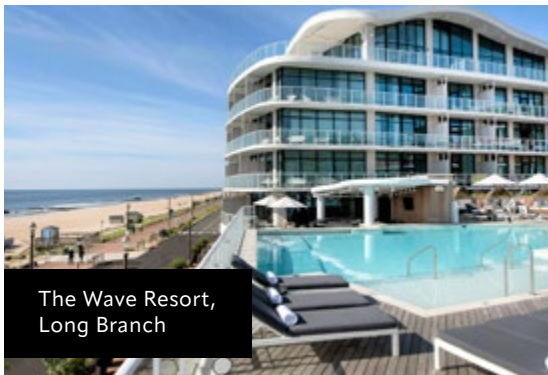
The Oyster Point Hotel
Red Bank



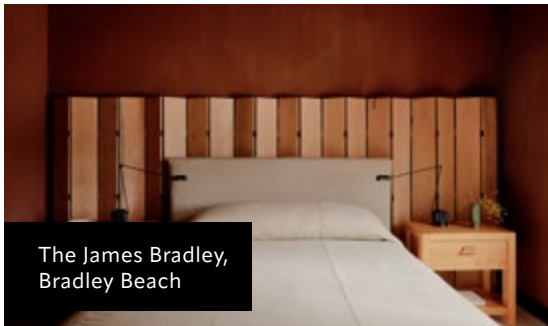
Ocean Place Resort & Spa
Long Branch



Bungalow Hotel
Long Branch



The Wave Resort,
Long Branch



The James Bradley,
Bradley Beach

Need a space for more than a few? Company picnics, family reunions, and destination weddings are found in every type of venue from our sprawling parks and beaches to our elegant hotels and conference centers. Choosing where you and your guests stay may prove as difficult as choosing where to dine, because we believe we have some of the most enchanting and well-appointed locations in the Country.

Whether you're embarking on a romantic getaway or organizing a corporate retreat for a thousand, Monmouth County boasts a plethora of unique options to suit your every need and desire.

A stay in Monmouth County means every possibility from intimate to extravagant is waiting for your personal touch.

**STAY
WITH US**



**For assistance, contact
Monmouth County Tourism
today at 800-523-2587.**

Beaches, Boardwalks, & Marinas

Miles of Surf, Sun & Sand

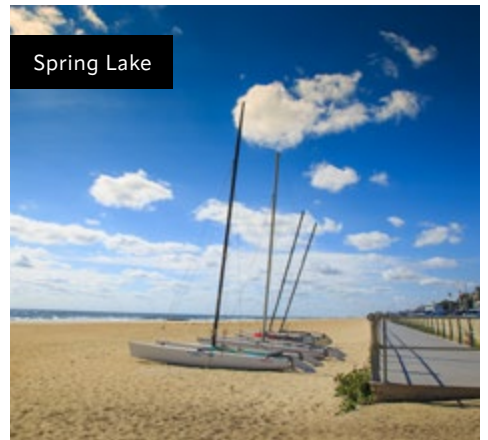
You can discover your perfect day at the Jersey Shore no matter how you choose to spend your time. Plan your unforgettable getaway and make memories to last a lifetime.

Monmouth County has an impressive array of shoreline delights. Spanning 27 miles of pristine, family-friendly beaches and an additional 26 miles of tranquil bayfront shores, the County is a haven for beach enthusiasts. With a total of 22 beaches to explore (comprising of 15 oceanfront, six bayfront, and one offering both ocean and bay access), alongside 14 charming boardwalks and promenades, there's no shortage of coastal charm to discover. Before embarking on your day of seaside adventure, we recommend checking the availability of any services to ensure a smooth and enjoyable experience.

Avon-by-the-Sea



Spring Lake



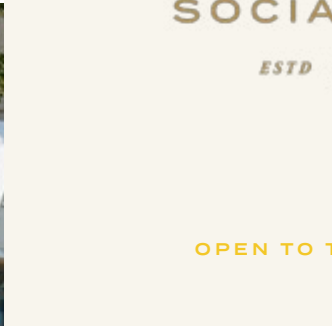
Asbury Park Beach & Boardwalk
Photo credit: Connor Kane





the
St. Laurent
 SOCIAL CLUB
 ESTD **S** 1886

OPEN TO THE PUBLIC



JOIN
 Social Club
 Memberships Available



SWIM
 Open late May
 Daily, 10am - 5pm



EAT
 Lunch & Dinner
 Closed Tuesdays



STAY
 20 Guest Rooms
 Room Blocks Available



EVENTS
 Private Events
 and Celebrations

MONMOUTH COUNTY BEACHES

		OCEAN ACCESS	BAY ACCESS	BOARDWALK/PROMENADE	SCHEDULED LIFEGUARDS	BEACH BADGE DAILY PARKING FEE	SEASON PASSES AVAILABLE	SENIOR DISCOUNT	TEEN DISCOUNT (CHECK AGES)	MILITARY VETERAN SPECIAL (CHECK DETAILS)	KIDS FREE (CHECK AGES)	ACCESSIBLE CHAIR AVAILABILITY	MOBILE BEACH MATS
Allenhurst	732-531-2757	●		●	●	●					●	●	●
Asbury Park	732-775-2100	●		●	●	●	●	●	●	●	●	●	●
Avon-by-the-Sea	732-502-4510	●		●	●	●	●	●	●	●	●	●	●
Bayshore Waterfront Park	732-787-3033		●								●		
Belmar	732-681-3700	●		●	●	●	●	●		●	●	●	●
Bradley Beach	732-776-2999	●		●	●	●	●	●	●	●	●	●	●
Deal	848-253-6111	●			●	●	●			●	●	●	●
Highlands	732-872-1224		●		●						●	●	●
Ideal Beach (Middletown)	732-615-2000		●								●	●	●
Keansburg	732-787-0215		●	●							●		●
Leonardo Beach (Middletown)	732-615-2000		●								●		
Loch Arbour	732-531-4740	●			●	●	●	●		●	●	●	●
Long Branch	732-571-5697	●		●	●	●	●	●	●	●	●	●	●
Manasquan	732-223-0544	●		●	●	●	●	●	●	●	●	●	●
Monmouth Beach	732-229-2204	●			●	●	●			●	●	●	●
Ocean Grove	732-775-0035	●		●	●	●	●	●	●	●	●	●	●
Sandy Hook	732-872-5970	●	●		●	●	●	●		●		●	●
Sea Bright	732-351-4700	●		●	●	●	●	●		●	●	●	●
Sea Girt	732-449-9335	●		●	●	●	●	●		●	●	●	●
Seven Presidents Oceanfront Park	732-229-7025	●			●	●	●	●	●	●	●	●	●
Spring Lake	732-449-0800	●		●	●	●	●	●		●	●	●	●
Union Beach	732-264-2277		●	●							●		



KNOW BEFORE YOU GO

BEACH BADGE

Most beaches in Monmouth County require visitors to purchase beach badges. Daily, weekly, and seasonal badges are available at each beach or through an app. Rates, discounts, and rules vary by location, so be sure to call ahead (see page 20) or visit [MonmouthCountyTourism.com](https://www.monmouthcountytourism.com) for more information.

BEACH ACCESSIBILITY

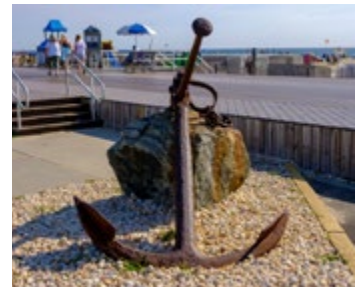
The Monmouth County Department of Health and Human Services regularly updates its Accessible Beach Guide, which is available by scanning the QR code below. Please review the Guide for information on beach access, curb cuts, ramps, walkways, mobile beach mats, surf chairs, and parking. This information is subject to change and accessibility at each beach varies.

BEACH SAFETY & REGULATIONS

While many beaches throughout Monmouth County have lifeguards on duty, each beach varies, and they are usually only available during summer months. Please call ahead (see page 20) or visit [MonmouthCountyBeaches.com](https://www.monmouthcountybeaches.com) for more information on beach safety.

Most areas welcome you to picnic, however, any type of glass or alcoholic beverages are not permitted on the beach. Pets are also excluded from beaches in-season, as well as most boardwalks. Non-powered vehicles, such as bikes, scooters, or skateboards, are restricted from most boardwalks and beaches during the summer.

Please check with the municipality where the beach is located to learn more.



ACCESSIBLE BEACH GUIDE





STROLL THE BOARDWALKS

Stunning beach views, delicious food, carnival games, shopping, famous treats like salt-water taffy and waffles and ice cream, are just some of the ways to enjoy time walking the diverse boardwalks of the County. Good times await at the Keansburg Amusement Park and Runaway Rapids while a day of shopping and cocktails can be found at Pier Village in Long Branch. Whether you spend a quiet afternoon in Manasquan or hit the clubs in Asbury Park, you'll never be bored on a Monmouth County boardwalk.

BUILD YOUR CASTLE IN THE SAND

Playing in the sand is fun no matter what time of the year you visit, but during the summer don't be surprised if you witness some epic sand art. For more than three decades the N.J. Sandcastle Contest on Belmar Beach has drawn crowds and competitors to 18th Avenue Beach for a day of digging and sculpting by the ocean. Another great day that includes sand art is the Wind & Sea Festival at the Bayshore Waterfront Park hosted by the Monmouth County Park System. So be sure to pack your shovels and buckets for a day of sun and sand.

CAST A WIDE NET

If it's fishing you enjoy, prepare to be thrilled. Monmouth County offers some of the best fishing spots in all of New Jersey. No idea how to fish? Not a problem! Monmouth County Park System offers annual freshwater fishing derbies for beginners as well as experienced anglers. Whether it's salt or fresh water, along the shore or off a pier, there's a spot for every type of fisherman. Please

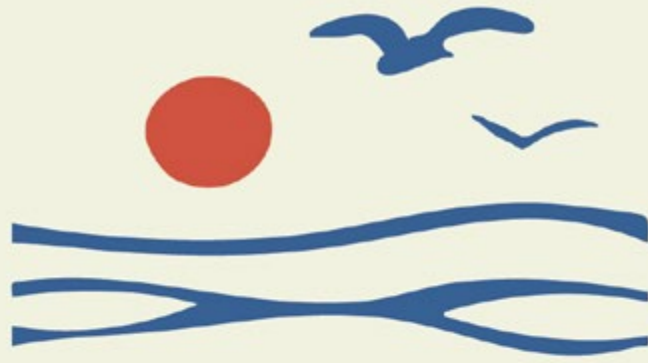
contact each municipality (page 12) for more information on regulations, rules, and limits.

NOT ALL NETS ARE FOR FISHING

Whether it's volleyball or pickleball, frisbee or spikeball, gather your friends and your spirit of competition and get a game going. Many beaches in the County offer volleyball courts, and some, like Ocean Road Park in Spring Lake, offer pickleball courts.



Bayshore Waterfront Park,
Port Monmouth



Spring Lake

SHOP. DINE. STAY.

Greater Spring Lake Chamber of Commerce

springlakechamber.org

732.449.0577

Spring Lake BID

visitspringlake.com

732.449.0037



Bradley Beach
Photo credit: Nicholas Marraro

SWIM 'TIL YOUR HEART'S CONTENT

The County offers many different types of waterways including coastal rivers, the Raritan Bay, and the Atlantic Ocean. Please visit MonmouthCountyBeaches.com for information on lifeguards. If you prefer your swimming in a pool, many area hotels offer swimming pools with your stay and the YMCA of Greater Monmouth County offers day passes.

CATCH THE WAVES

Whether you surf or bodyboard, Monmouth County has all the right ingredients for enjoying time in the Atlantic's surf. Asbury Park, Belmar, Deal, the Village of Loch Arbour, Long Branch, Manasquan, Sandy Hook, and Sea Bright are just a few of the places that offer steady waves, miles of sandy beaches, and a laid-back vibe. Summer waters may be the warmest, but it isn't the only season for surfing our shores. "Local summer", known also as September, brings both the Belmar Pro in Belmar and the Sea.Hear.Now Festival in Asbury Park, where both amateur and pro surfers alike show their skills. Late fall into winter is considered one of the best times of the year to catch the larger swells and invites more seasoned surfers to pack their wetsuits.

ENJOY THE NEW YORK CITY SKYLINE

It's known all over the world as one of the most famous views - the expansive and impressive New York City Skyline. Monmouth County offers several ways to capture that excitement and beauty and two of our favorites are by land and by sea. A beach day at a Bayshore beach along the Raritan Bay offers unique views of the City, with its majestic bridges and imposing buildings creating a background for the water and sand. Want a closer look? One of our many marinas can provide rentals, charters, or docks for boating enthusiasts.

THE RELAXED APPROACH

With so many beach adventures awaiting and things to do at our beaches we want you to remember to take time to relax. Breathe in the saltwater air, read a book, pack a picnic and taste each bite as you listen to the waves, or fly a kite and watch it dance through the air next to the seagulls. Manasquan, Ocean Grove, Sea Girt, Seven Presidents Oceanfront Park in Long Branch, and Spring Lake all offer easygoing, casual beaches where you can do so much or simply unwind.

Visit

BELMAR



WWW.BELMARPASAIL.COM

A Must Do Summer Activity

Parasailing & Banana Boating Rides



BOOK NOW

Mention This Ad For \$10 Off Bookings Before 11am Only

732-681-8359

Belmar Marina, 608 River Rd. Belmar





Greetings from Monmouth County!

America's 250th Birthday is here! On July 4, 2026, the United States will mark a once-in-a-generation milestone: the 250th anniversary of our nation's founding. This historic moment will be commemorated nationwide, and in Monmouth County, preparations are already underway for a countywide celebration.

The Battle of Monmouth on June 28, 1778, was pivotal to the fight for freedom. It was the biggest and longest one day battle of the Revolutionary War. But Monmouth County's Revolutionary story is more than the Battle of Monmouth; it's the story of families and loyalties divided, and of people from different backgrounds attempting to navigate through an uncertain time in our history. The fighting and strife continued throughout the Revolutionary War. Monmouth County was truly a battleground in the cause of freedom!

The MonmouthNJ 250 Committee, formed by the Monmouth County Board of County Commissioners in 2023, is coordinating the county's commemoration of America's 250th birthday while highlighting Monmouth County's significant role in the struggle for independence.

Events and programs will take place across our communities in Monmouth County. Signature countywide events include the "Flag Day 5K and 1-Mile Freedom Walk" in Holmdel on June 14, a Semiquincentennial Gala on June 25 in Holmdel, and "America's Big Birthday: Red, White & YOU" Parade through Middletown Township on June 28, the anniversary of the Battle of Monmouth. Additional educational programs, historic commemorations, exhibits, concerts, and family-friendly activities will also provide an opportunity for residents and visitors of all ages to participate.

America's 250th birthday is more than a celebration of the past - it is an opportunity to reflect on our shared ideals and build a strong future together.

To learn more or get involved, visit MonmouthNJ250.org and follow @MonmouthNJ250 on social media.



Christine G. Hanlon
Monmouth County Clerk
Co-Chair

Christine Gordon Hanlon



Thomas A. Arnone
Monmouth County Commissioner Director
Co-Chair

Thomas A. Arnone



America Turns 250!

★★★★★ 2026 ★★★★★

Monmouth County is ready to celebrate!
**Scan below to discover events happening all
over the county!**



MonmouthNJ250.org



CELEBRATING AMERICA'S 250TH BIRTHDAY IN MONMOUTH COUNTY



FLAG DAY 5K & 1-MILE FREEDOM WALK



LACE UP FOR HISTORY!

JUNE 14, 2026

BELL WORKS

101 Crawford's Corner Road, Holmdel, NJ 07733

Join in for a celebration of America's semiquincentennial—**250 years of courage and community**. This isn't just a race... it's a **red-white-and-blue milestone** that won't come around again for another 50 years!

Dash through a course bursting with **patriotic spirit**, high-energy music, and cheers as we honor the past, **celebrate the present**, and stride boldly into the future. Whether you're a seasoned runner, a casual jogger, or a family ready for **festive fun**, this 5K will have you feeling like fireworks are going off under your feet. Participants are encouraged to wear red, white, and blue on race day to show your patriotic pride.



Be part of a historic moment!

Run the race that happens once every half-century.
Celebrate 250 years of the United States of America!



MonmouthNJ 250 Committee

Christine G. Hanlon
Monmouth County Clerk
Co-Chair

Thomas A. Arnone
Monmouth County Commissioner Director
Co-Chair

Monmouth County Board of County Commissioners

Thomas A. Arnone, Director
Dominick "Nick" DiRocco, Deputy Director
Susan M. Kiley
Ross F. Licitra
Erik Anderson



MonmouthCountyTourism@gmail.com

MonmouthNJ250.org

**CELEBRATING AMERICA'S 250TH BIRTHDAY
IN MONMOUTH COUNTY**



america's BIG BIRTHDAY PARADE
“RED, WHITE & YOU!”
MONMOUTH COUNTY CELEBRATES AMERICA'S SEMIQUINCENTENNIAL
ON THE ANNIVERSARY OF THE BATTLE OF MONMOUTH

You're invited to join the *MonmouthNJ 250 Committee* and *Middletown America 250* in celebrating America's 250th birthday and honoring Monmouth County's rich Revolutionary history on the anniversary of the pivotal Battle of Monmouth!

After the parade, enjoy a FREE Family Festival at Mater Dei Park featuring live entertainment, rides, food trucks, and fun for all ages. Join us for this once-in-a-lifetime celebration filled with community spirit and patriotic flair.

Sunday, June 28, 2026
Parade start time 12:30 P.M.
Middletown, New Jersey

SCAN QR CODE TO SEE PARADE
MAP, & TO REGISTER!



MonmouthNJ250.org

**CELEBRATING AMERICA'S 250TH BIRTHDAY
IN MONMOUTH COUNTY**



DISCOVER THOMPSON PARK

THE "CROWN JEWEL" OF THE MONMOUTH COUNTY PARK SYSTEM - AND YOUR GATEWAY TO AMERICA'S 250TH BIRTHDAY CELEBRATION!

THROUGHOUT 2026 ENJOY TWO FREE CAN'T-MISS EXPERIENCES FOR ALL AGES!

WALK THROUGH HISTORY

Life in Colonial Monmouth County brings the American Revolution to life with an immersive timeline of the events that shaped our communities - and our nation.
-Thompson Park Visitor Center | Open daily during park hours starting in May.

SEE HISTORY THROUGH ART

The MonmouthNJ 250 Fine Art Show showcases stunning, Revolution-inspired works by talented local Monmouth County artists.
-Thompson Park Creative Arts Gallery | Open during gallery hours starting in May.



SCAN THE QR CODE TO EXPLORE EXHIBITS AND PLAN YOUR VISIT.
EXPERIENCE HISTORY LIKE NEVER BEFORE - ONLY IN MONMOUTH COUNTY.



MonmouthNJ250.org

**CELEBRATING AMERICA'S 250TH BIRTHDAY
IN MONMOUTH COUNTY**



**MONMOUTH COUNTY LIBRARY
HISTORY RUNS THROUGH US**

From Allentown to Manalapan to Shrewsbury, every corner of the county fought for independence.



The Monmouth County Library System has a full schedule of programs for America's upcoming 250th birthday!

Scan code to see program schedule, locations and more information.

**2026
PROGRAM
GUIDE**

Scan here
for more details



MonmouthNJ250.org

**CELEBRATING AMERICA'S 250TH BIRTHDAY
IN MONMOUTH COUNTY**



**TAP IN FOR AMERICA'S 250TH
IN MONMOUTH COUNTY!**

DOWNLOAD OUR APP TODAY!
Search: MonmouthNJ 250

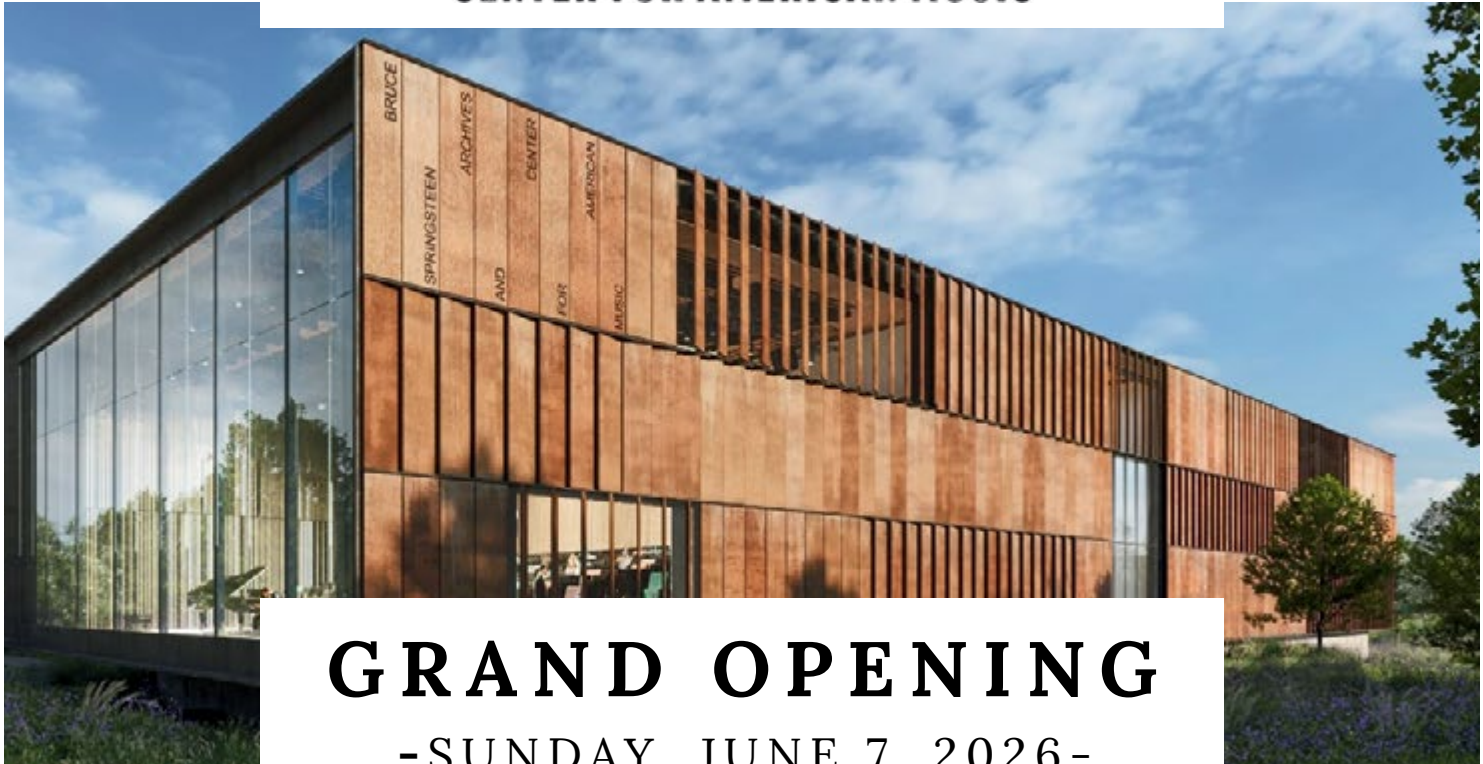


SCAN
TO DOWNLOAD!



MonmouthNJ250.org

BRUCE SPRINGSTEEN CENTER FOR AMERICAN MUSIC



GRAND OPENING

-SUNDAY, JUNE 7, 2026-

The Bruce Springsteen Center for American Music on the campus of Monmouth University officially opens to the public on Sunday, June 7, 2026. The new facility will feature:

- A Dolby Atmos certified screening room,
- An archive for research and public viewing, and
- Exhibition galleries dedicated to Bruce Springsteen and the E Street band and the broader story of American music.

400 CEDAR AVENUE
WEST LONG BRANCH, NJ, 07764

WWW.SPRINGSTEENCENTER.ORG

 @SPRINGSTEENCENTER

Keyport

NEW JERSEY



Located at the northern end of Monmouth County, historic Keyport was established in the 1800s as a major center of shipping and commerce. Today its charming, pedestrian-friendly downtown adjacent to the bayfront features a variety of antique and specialty shops and businesses. Conveniently located just off exit 117 of the Garden State Parkway, Keyport is known for fine dining, as well as, a wide selection of cafes and unique eateries.



For details on events, dates and times check our website
visitkeyport.org

Keyport Bayfront Business Cooperative

732-739-5138



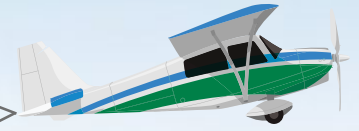
Visit Keyport



visitkeyport

NJ's Best Bet

Summertime Family Fun



- May 9 Opening Day
- May 10 Mother's Day
- May 23-25 Jersey Shore Food Truck Festival
- June 7 54th Annual NJ Irish Festival
- June 13 Haskell Preview Day & Giveaway
- June 21 Father's Day
- June 28 Classic Car Show & Oldies Day
- July 11 Sun Cruiser Cigar Luncheon
- July 18 NYRA Bets Haskell Day
- July 25-26 Italian Festival & Wine Tasting
- August 2 Latin Festival: Tacos & Tequila
- August 8 Bags, Bands & Beer Cornhole Tournament
- August 15-16 Surf & Turf Seafood Festival
- August 23 NJ Thoroughbred Festival & Giveaway
- Sept. 5-7 BBQ & Craft Beer Festival
- Sept. 12 Food Trucktemberfest

FREE Parking - Admission \$7
Kids 12 & under FREE



MONMOUTH PARK

★ **FREE FAMILY FUN DAYS** ★

Every Sunday, Memorial Day to Labor Day
Face Painters, Bounce House, Pony Rides, & more!

★ **BRING YOUR OWN** ★

BYO is permitted in our vast picnic area.
Over 100 first-come, first-served tables.

For a complete list of events, visit monmouthpark.com

MONMOUTH MILITARY HISTORY



From the earliest settlers in the New World to the Revolutionary War and beyond, Monmouth County has played an important role in our Country's military history with her sons and daughters sacrificing life and safety for the freedoms we enjoy today. Below are five locations specifically dedicated to the overall history of the County as well as our military history. More than a dozen museums and historical locations are highlighted on the Cultural & Heritage Virtual Tours on pages 52 & 53 and guide you through the various locations. As ever, Monmouth County remains grateful to our military members for their service and many locations throughout the County offer discounts to current and retired military personnel.

MONMOUTH COUNTY HISTORICAL ASSOCIATION

Freehold
monmouthhistory.org

FORT HANCOCK

Highlands
nps.gov/gate

MONMOUTH BATTLEFIELD STATE PARK

Manalapan
nj.gov/dep/parksandforests/parks/monmouthbattlefieldstatepark.html

NATIONAL GUARD MILITIA MUSEUM OF NEW JERSEY

Sea Girt
njmilitiamuseum.org

NEW JERSEY VIETNAM VETERANS' MEMORIAL FOUNDATION AND VIETNAM ERA EDUCATIONAL CENTER

Holmdel
njvvmf.org



The Purple Heart Memorial at the New Jersey Vietnam Veterans' Memorial in Holmdel.

DID YOU KNOW?



Battle of Monmouth

The Battle of Monmouth, also known as the Battle of Monmouth Court House, was fought near Monmouth Court House in modern-day Freehold Borough, New Jersey, on June 28, 1778, during the American Revolutionary War. General George Washington led the Continental Army against the British forces in the hills and farmlands of Monmouth County in the War's longest battle.

The Battle is considered a major turning point because it caused future-president Washington's critics to see him as capable of handling the American forces. Annual reenactments of the battle take place at Monmouth Battlefield State Park to honor the anniversary and invites visitors to witness firsthand how the events unfolded.

HONOR NEW JERSEY'S FALLEN HEROES

AND LEARN THE HISTORY BEHIND THIS UNIQUE HISTORIC MASTERPIECE



1964 IROQUOIS UH-1D



FALLEN SOLDIER



WAR DOGS



New Jersey Vietnam Veterans'
Memorial and Museum

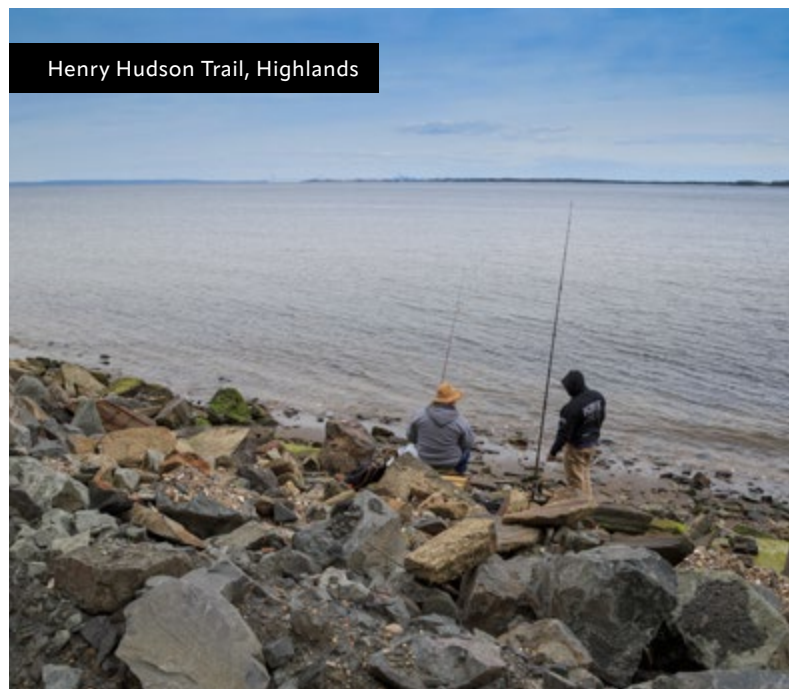
The only one of its kind in the Nation.

1 MEMORIAL LANE, HOLMDEL NJ 07733 · www.njvvmf.org



Thompson Park, Lincroft
Photo credit: Connor Kane

Experience a Day of Adventure in Monmouth County's Parks



Discover the wonders of the Monmouth County Park System, boasting 43 exquisite properties ranging from parks and golf courses to historic sites and conservation areas. With more than 18,000 acres dedicated to parks and open space, our County offers an unparalleled sanctuary for nature enthusiasts and leisure seekers alike.

Whether you're an avid hiker, a history aficionado, or an angler at heart, our nationally recognized Park System will connect you with nature and offers a diverse array of activities.



Turkey Swamp Park,
Freehold



FUN FOR THE WHOLE FAMILY

Children and parks are a natural pairing. Whether it's winter, spring, summer, or fall, there's always something to do at Holmdel Park. The 664-acre park is loved for its winter fun, offering great hills for sledding and an ice-skating pond when conditions are right. With two playgrounds, nature trails, tennis courts, and a group picnic area available for rent, it's the perfect spot for a family gathering.

Dorbrook Recreation Area in Colts Neck is another kid-favorite spot. Basketball courts, tennis courts, pickleball courts, a playground for children of all abilities, a splash park, and an in-line skating rink make Dorbrook a great place to play. Furry friends are welcome at Monmouth County's parks! If you're planning a day at the park, just be sure to bring along a leash.

LEARNING AS YOU EXPLORE

Dating back more than 340 years, Monmouth County is rich with history and stories of the past. From National Historic Sites, to farm life in the 1890s, to retracing the battles of the Revolutionary War, many County parks are living history museums of all that has come before. Historic Longstreet Farm and Historic Walnford both showcase life as it once was and are great places to start a day of history. (For more detail about historic sites, turn to our historic sites section starting on page 36.)

WATER ADVENTURES

If you're excited by the thought of navigating small watercrafts like canoes and kayaks, Manasquan River Greenway offers intermediate to expert challenges. For beginners, Bayshore Waterfront Park, Thompson Park, and Turkey Swamp Park may be a better fit.

Historic Walnford,
Upper Freehold



Bayshore Waterfront Park,
Port Monmouth



GONE FISHIN'

Saltwater or freshwater fishing is plentiful throughout the County Park System. Depending on what you're after, striped bass, fluke, flounder, catfish, bluefish, trout, bass, or a plethora of other fish and shellfish can be found in our creeks, ponds, rivers, and the Atlantic Ocean. If you're looking to cast from the shore or a boat, Fisherman's Cove in Manasquan offers 55-acres of beachfront park. If ponds and rivers are more to your liking, try Shark River Park in Neptune and cast from shore for bluegills, sunnies, and trout.

GET YOUR GAME ON

Missing your weekly pickleball match? From East Side Park in Red Bank to Wardell Park in Tinton Falls, local parks offer both indoor and outdoor courts for tennis, basketball, pickleball, and other sports. Fort Monmouth Recreation Area in Tinton Falls has indoor and outdoor shared-use courts and hosts instructional programs and open play. Maybe disc golf is more your passion? Wolf Hill Recreation Area in Oceanport offers an 18-hole disc golf course where players are invited to bring their own disc and play for free. Is your athletic club or organization looking for a place to host a game? Several parks offer athletic field and facility rentals for larger groups, including: soccer, softball, in-line skating, field hockey, lacrosse, flag football, pickleball, and tennis at Dorbrook Recreation Area; a full gym and half gym at Fort Monmouth Recreation Center; tennis at Holmdel Park; tennis, pickleball, and rugby at Thompson Park; soccer at Turkey Swamp Park; and softball or disc golf at Wolf Hill Recreation Area.

STOP TO SMELL THE FLOWERS

Deep Cut Gardens in Middletown offers 54 acres of gardens and greenhouses planned as a living catalog of cultivated and native plant materials to be observed through the seasons. The Parterre features 52 varieties of roses with more than 180 bushes often at peak bloom around mid-June. The greenhouse features a variety of plants, including orchids, and is open year-round.

TAKE A HIKE

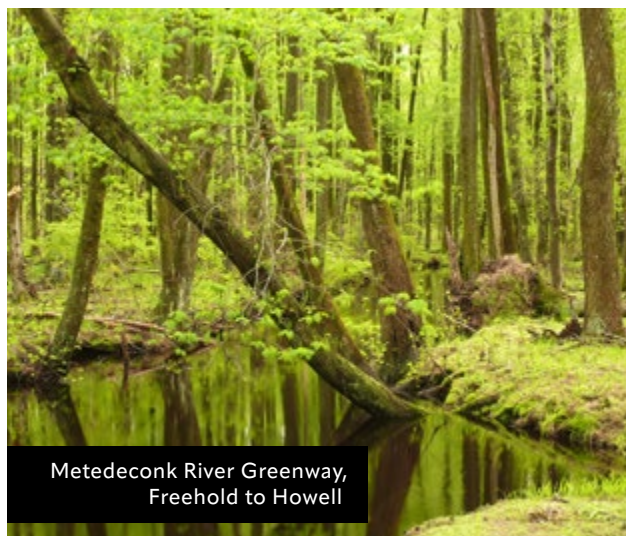
Whether you're looking for a leisurely walk or counting your steps, the 148 miles of trails throughout dozens of parks makes spending time outdoors a great option. Hartshorne Woods Park in Highlands offers a 15-mile trail to explore for those who enjoy a more challenging hike while taking in beautiful views of the Navesink River. The Henry Hudson Trail offers the County's longest trail spanning 24 miles with an Activity Center based in Leonardo. A former railroad right-of-way, the Trail is paved, relatively flat, and often tree-lined with views of surrounding wetlands, streams, and fields. Seeking a more relaxed nature trail? Try Huber Woods Park in Middletown Township and experience the sounds, sights, and smells of the seasons.



Deep Cut Gardens,
Middletown



Dorbrook Recreation Area,
Colts Neck



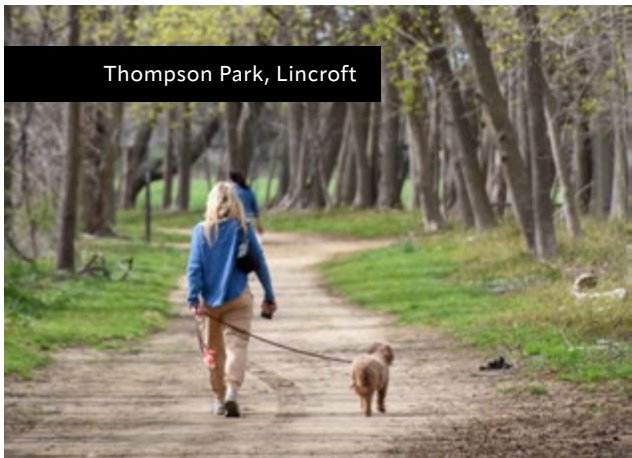
Metedeconk River Greenway,
Freehold to Howell



Sunnyside Equestrian Center, Lincroft



Manasquan Reservoir Environmental Center, Howell



Thompson Park, Lincroft

HORSE COUNTRY

Home to both equestrian champions and thoroughbred racehorses, Monmouth County has a long history with riding that includes 17 parks with more than 100 miles of horseback riding trails. The Sunnyside Equestrian Center in Lincroft is the home of the Park System’s Equestrian Division that provides experiences for people of all abilities, with an emphasis on offering the benefits of therapeutic horseback riding to individuals with physical and cognitive disabilities. The Center features an indoor area, an outdoor instruction ring, and an 18-stall barn, as well as riding lessons and other programs.

CAMPING

If one day in the parks is just not enough, plan a camping trip at 2,388-acre Turkey Swamp Park in Freehold. A family campground is located in the Park, offering 64 tent and RV campsites along with three cabins. Amenities include electric, water services, restrooms and showers, fire rings, picnic areas, and a playground. Campsite reservations can be made online or by calling the campground office.

MONMOUTH COUNTY FAIR

An event for all ages, packed with free entertainment, 4-H shows and exhibits, rides and games, live music, Robinson's Racing Pigs, Bwana Jim Wildlife Show, Hilby the Skinny German Juggle Boy, Tommy Turvey's Stunt Horses and Dogs, living history displays, home and garden demonstrations and many food vendors. A fun experience for all! For more information, visit MonmouthCountyFair.com.



Mark Your Calendars for the 2026 Monmouth County Fair!

- July 22 through July 24 from 4:00 to 11:00 p.m.
- July 25 from 11:00 a.m. to 11:00 p.m.
- July 26 from 11:00 a.m. to 6:00 p.m.

To learn more about the Monmouth County Park System, visit MonmouthCountyParks.com





Visit

NEPTUNE

where coastal charm meets endless adventure

**INDULGE YOUR SENSES WITH NEPTUNE'S VIBRANT DINING SCENE,
UNIQUE BOUTIQUES, ANTIQUE SHOPS, AND ART GALLERIES.
DISCOVER HIDDEN TREASURES WHILE SUPPORTING LOCAL BUSINESSES.
IMMERSE YOURSELF IN THE LIVELY COMMUNITY SPIRIT WITH FESTIVALS,
EVENTS, AND STUNNING COASTAL VIEWS. CONVENIENTLY LOCATED
NEAR MAJOR HIGHWAYS AND ATTRACTIONS, NEPTUNE IS YOUR PERFECT
BASE FOR EXPLORING THE JERSEY SHORE AND BEYOND.**



RIVER VIEWS.
WEEKEND VIBES.

Check-in awaits.

Our newly refreshed
rooms, seasonal pool
access, and all-day dining
make weekends here feel
effortless. Spring &
summer stays now
booking.



Molly Pitcher Inn

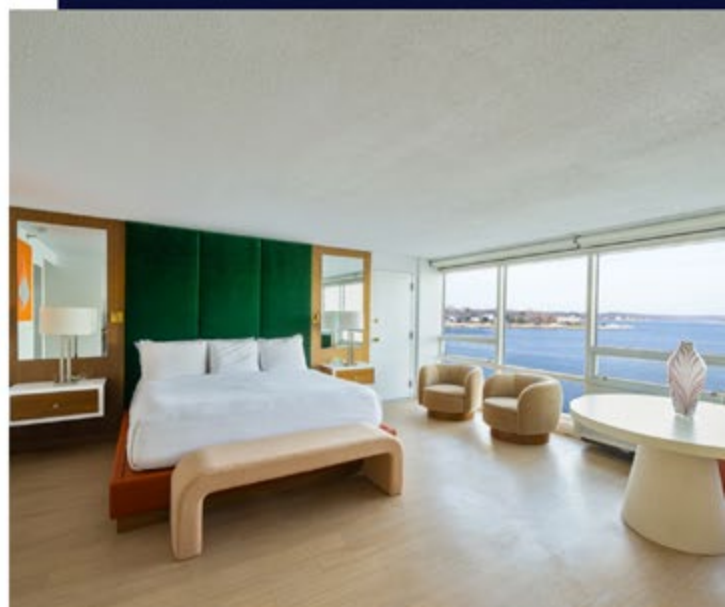
732-747-2500
themollypitcher.com



OYSTER POINT
HOTEL

732-530-8200
theoysterpointhotel.com

Celebrating 
250 YEARS
of Red, White & Blue



Hit the Links



With six award-winning County courses for players of all skill levels, adding a round or two of golf to your vacation plan is as simple as scheduling a tee time on the Monmouth County Park System 24/7 online reservation site.

Featuring two 18-hole executive courses, five championship 18-hole courses, a 9-hole course, par-3 course, and many warm-up ranges, you can spend the day or just a few hours chasing fairways and putting greens.

BEL-AIRE GOLF COURSE

Wall

Open year-round, Bel-Aire Golf Course is a 27-hole facility, featuring an 18-hole executive par 60 course that has six par 4's, a 9-hole par 3 course, and a well-stocked golf center. Snacks and refreshments are available through vending machines. Bel-Aire is a wonderful place to learn the game of golf in a fun and relaxed setting. The Park System offers an extensive number of introductory and intermediate golf clinics for adults and juniors at Bel-Aire. Call 732-462-9224, ext. 1 for information on golf clinics and lessons.

CHARLESTON SPRINGS GOLF COURSE

Millstone Township

Designed by noted golf course architect Mark Mungeam, Charleston Springs offers two championship golf courses. Players can choose from the links-style North Course or

the parkland-style South Course. The golf complex features a fully stocked golf center, food concession snack bar, locker rooms, and showers. The warm-up range has grass tees and six target greens. The well-manicured practice putting green is over half-acre in area and has eight target cups. There is also a 2-mile walking trail and discounted greens fees for Military Service Members, active and retired, and veterans.

HOMINY HILL GOLF COURSE

Colts Neck

Often rated as New Jersey's #1 public golf course, Hominy Hill is the crown jewel of the Monmouth County Park System's golf offerings. This classic Robert Trent Jones design has been the host of two USGA National Amateur Public Links championships and numerous regional championship tournaments. The course measures 7,049 yards from the blue tees and has USGA course and slope ratings of 73.8 and 135 from the blue tees. Scattered throughout the course are 138 bunkers, with

water coming into play at four holes. Golf course amenities include a well-stocked golf center, GHIN handicapping, a warm-up range, locker rooms with showers, a one-mile walking trail, and an immaculately manicured putting green. In addition, savor the taste of victory at the Hominy Hill Grille & Tap, the best spot for a quick and delicious refuel on the golf course. Featuring an all-new menu, the Grille & Tap offers more than just snacks and drinks; from savory bites, sweet treats, exclusive drinks, and refreshing sips, the menu is designed to keep you energized and focused on playing your best round. Along with the Grille & Tap, The Clubhouse at Hominy Hill is ready to plan your next event. Newly renovated with views overlooking the course, this space can host any social event from weddings to fundraisers.

HOWELL PARK GOLF COURSE

Farmingdale

A rustic setting, manicured bentgrass fairways, and fast-sloping greens, provide a golfing experience often associated with private clubs. Repeatedly ranked among the top 50 public golf courses in America by national golf publications, this par 72 course measures 6,964 yards from the blue tees and has USGA course and slope ratings of 73 and 126. There is also a warm-up range and a large, immaculately maintained practice green. Beginning and intermediate golf clinics are available.

PINE BROOK GOLF COURSE

Manalapan

This junior-friendly course offers an additional set of forward tee markers and an adjusted scorecard making it the perfect course to introduce a fledgling player. Equally exciting for seasoned players, Pine Brook is an 18-hole, par 61 executive-length golf course featuring a golf center as well as snacks and refreshments available through vending machines.

SHARK RIVER GOLF COURSE

Neptune

Designed by Scottish golf pro Joseph "Scotty" T'Anson in the early 1900s, Shark River Golf Course features tight, narrow fairways, deep-faced bunkers, and the challenge of small, well-protected greens. The holes vary from a short, drivable par 4 to a long, risky par 5, with some strong par 3 holes mixed in. Even at its modest length of 6,457 yards, this course offers a stern but fair test to all golfers.

TEE TIME SCAN CODE

For more on
Monmouth County
Golf Courses



Explore the Outdoors Camping Adventures in Monmouth County



Camping is the perfect way to disconnect from the hustle and bustle of everyday life and reconnect with nature. Whether you're hiking through scenic trails, fishing by a peaceful lake, or simply enjoying the quiet of the outdoors, camping offers a chance to relax, recharge, and create lasting memories with family and friends.

Allaire State Park

4265 Atlantic Avenue, Farmingdale
732.938.2371

Reservations: camping.nj.gov

Cheesequake State Park

300 Gordon Road, Matawan
732.566.2161

Reservations: camping.nj.gov

Pine Cone Resort

340 Georgia Road, Freehold
732.462.2230

Reservations: pineconenj.com

Timberland Lake Campground

1335 Reed Road, Cream Ridge
732.928.0500

Reservations: timberlandlakecampground.com

Turkey Swamp Park/Nomoco Activity Area

200 Georgia Road, Freehold
732.462.7286

Reservations: monmouthcountyparks.com

Sandy Hook

The Nation's Beach



MORE THAN 4,000 ACRES of land, bay, and ocean waters in Monmouth County are part of the gateway to the National Park Service for millions of visitors every year. Sandy Hook is a slender, six-mile strip of land that juts out from the northeast tip of the County and is part of the Gateway National Recreation Area. Offering green spaces and beaches alongside historic structures and cultural landscapes, every day the Park offers something for you to explore, envision, and enjoy!

Sandy Hook is a seaside playground rich with swimming, sailing, fishing, bird watching, nature walks, camping, cultural events, concerts, and historic sites. The 2,000-acre barrier peninsula offers ocean beaches and a beautiful view of the Manhattan skyline. The bay side of the peninsula is perfect for water sports, while the inlet or western shore is lined with protected bay beaches that are home to a maritime forest and bird sanctuary designated by the National Audubon Society as a globally significant Important Bird Area. The Park includes a visitor center and multi-use trails for biking, skating, and walking.

At the northern tip of the peninsula are Fort Hancock, Sandy Hook Proving Ground, and the Sandy Hook

Lighthouse which are all National Historic Landmarks. Fort Hancock is a U.S. Army Coast Artillery Post that protected the New York Harbor from 1895 to 1974 and has remained vital to American defense up until the nuclear age. Home to several batteries and historic Army buildings, including the oldest operating lighthouse in the U.S., as well as a former United States Life-Saving Service station building, and Spermaceti Cove, these landmarks bear witness to the maritime history of the peninsula.

Gateway National Recreation Areas
Highlands | 732-872-5970
nps.gov/gate

FUN FACT

Sandy Hook Lighthouse

The oldest working lighthouse in the United States, and a National Historic Landmark, was first lit on June 11, 1764, to assist ships in the New York Harbor.



2026

Highlands, NJ

Where the Jersey Shore Begins



Fiesta de Mayo 5/2



Seaport Craft Show 5/24



Fluke Tournament 6/20



Farmers Market June - Nov.



Taste of Highlands 6/27



Pride Fest in the Park 7/11



Clamfest 7/31 - 8/2



Trudy Fest, honors Gertrude Ederle, English Channel record-breaker who trained in Highlands

Trudy Fest 8/15



Brew by the Bay 9/12



Twin Lights Ride 9/27



Oktoberfest 10/3



Fall Taste of Highlands 10/10



Highlandsnj.com

Highlands Business Partnership • Ph: 732-291-4713



Home to Three State Parks

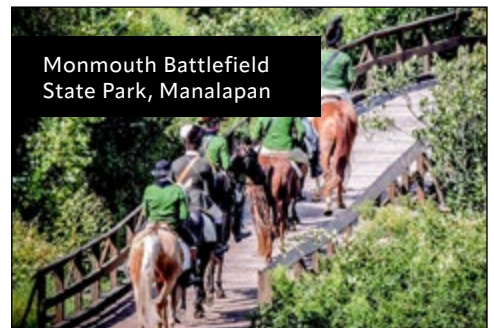
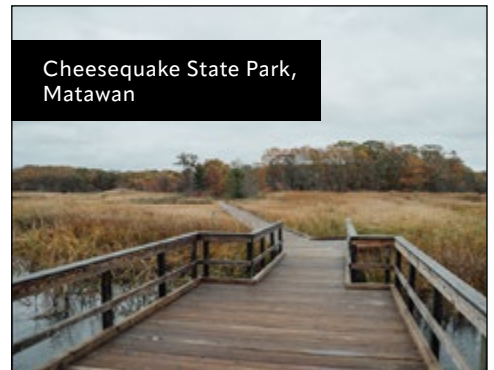


Photo Credit: New Jersey State Park Service

ALLAIRE STATE PARK AND HISTORIC ALLAIRE VILLAGE

4265 Atlantic Avenue, Farmingdale | 732-938-2371
allairevillage.org

The 3,199-acre park is best known for its historic 19th-century iron making town, Allaire Village, and the Pine Creek Railroad, a narrow-gauge train ride. Allaire Village offers living history with festivals, arts events, and other events throughout the year. The Manasquan River, which winds through the Park, provides excellent opportunities for freshwater fishing. The river's floodplain provides habitat for more than 200 species of wildflowers, trees, and plants as well as habitat for birds and other wildlife. Hiking and multi-use trails are found throughout the Park.

CHEESEQUAKE STATE PARK

6 Gordon Road, Matawan | 732-566-2161
nj.gov/dep/parksandforests/parks/cheesequakestatepark.html

Cheesequake's uniqueness lies in its geographical location. The 1,569-acre park is situated in the middle of a transitional zone between two different ecosystems. Open fields, saltwater and freshwater marshes, a white cedar swamp, pine barrens, and a northeastern hardwood forest lend themselves to camping, fishing, swimming, boating, picnic areas, winter sports, trails, and an educational visitor center.

MONMOUTH BATTLEFIELD STATE PARK

20 State Route 33, Manalapan | 732-462-9616
nj.gov/dep/parksandforests/parks/monmouthbattlefieldstatepark.html

On a blistering hot day on June 28, 1778, the 1,818 acres that is now Monmouth Battlefield State Park was the site of one of the longest and most significant battles of the American Revolutionary War. In the day-long battle in the hills, wood lots, farm fields, and meadows, the main Continental Army, retrained at Valley Forge, repulsed attacks by the main British Army. By the end, more than 600 men were dead, dying, or wounded and the Continental Army held the field. The Park depicts that history and includes Craig House, a restored Revolutionary War farmhouse, a visitor's center, picnic area, playground, hiking and cross-country ski trails, and a bridle path.

BATTLEVIEW
orchards



FAMILY FARMING SINCE 1908

91 Wemrock Road, Freehold, N.J. 07728



PICK YOUR OWN CROP AVAILABILITY

PLEASE CALL OR CHECK OUR WEBSITE FOR THE MOST UP TO DATE INFORMATION!



STRAWBERRIES

Mid - May until supplies last



SOUR CHERRIES

Late June until supplies last



PEACHES

Mid-July through early September



NECTARINES

Late July through August



APPLES

Late August through October (WHILE SUPPLIES LAST)

Late Aug./Early Sept.

Gala
Jonamac
HoneyCrisp
Macintosh

September

Red Delicious
Golden Delicious
Empire
Jonagold
Macoun
Cortland

Late Sept/ October

Crispin/Mutsu
Stayman Winesap
Rome Beauty
Cameo
Granny Smith
Braeburn
Fuji



PUMPKINS

Late September through October



HAYRIDES

October (Weekends only!)

**BATTLEVIEW'S FRESH GROWN PRODUCE
AVAILABLE IN OUR COUNTRY STORE SEASONALLY!**

APPLE CIDER

Mid-September through April

SWEET CORN

Early July through August

TOMATOES

Late July until supplies last

*SWEET CORN AND TOMATOES ARE NOT AVAILABLE FOR PICK YOUR OWN

COUNTRY STORE HOURS

JANUARY - APRIL

9AM - 5PM DAILY - CLOSED TUESDAYS

MAY - DECEMBER

9AM - 6PM DAILY - CLOSED TUESDAYS

STAY CONNECTED...



BATTLEVIEWORCHARDS.COM



FACEBOOK.COM/BVORCHARDS



@BVORCHARDS



732-462-0756



Visit Allaire Village!

LOCATED IN THE HEART OF THE JERSEY SHORE

★ Historic Interpretation of the 1830s
Iron Production Village

★ 19th Century Craft Demonstrations

★ Special Events

★ School, Group & Public Tours

★ History Kids Club

★ Historic Chapel for Weddings,
Baptisms & Memorials

★ Special Holiday Events, Programs & Tours

★ Volunteer Service Program & Internships

★ Allaire Library is Now Open
By Appointment

**General Store & Bakery Featuring Gift Shopping, Souvenirs,
Homemade Desserts, Baked Goods & More!**

LOCATED WITHIN ALLAIRE STATE PARK

4263 Atlantic Avenue, Farmingdale, NJ 07727 732-919-3500 AllaireVillage.org

The Historic Village at Allaire is a 501(c)3 nonprofit organization dedicated to preserving all the historic buildings at Allaire along with serving 9,000 students annually through educational programming.





Bell Works, Holmdel

Cultural & Heritage Virtual Tours

RICH IN HISTORY in so many ways, Monmouth County is a place you can immerse yourself in all that has come before and how it adds to the present-day quality of life in our four regions. Eight virtual byway tours are waiting to help you learn more about some of the most interesting people, places, and things the County has to offer. We want you to get to know our past and present and be a part of our future. We hope you enjoy your journey through Monmouth County. To learn more, visit MonmouthCountyTourism.com.



Strauss Mansion Museum, Atlantic Highlands



Crawford House, Tinton Falls

BAYSHORE DRIVE

While there is no single continuous roadway running along the Bayshore waterfront, the Bayshore Drive virtual tour allows residents and visitors to travel along local streets to explore the region's downtowns and waterfront destinations. Those seeking solitude can find remote beaches that provide panoramic views of New York City across the Bay.

COUNTRY TO COAST BYWAY

The Country to Coast Byway begins near a 19th century living history farm (Longstreet Farm/Holmdel Park) and ends with a view of the Atlantic Ocean from a bridge above the Shrewsbury River. Those traveling along this route get to experience three centuries of history and progress as they meander through woodlands, farm fields, horse country, villages, small towns, and some of the most exclusive neighborhoods in the County.



SCAN ME



Old Tennent Church, Manalapan



JBJ Soul Kitchen, Red Bank



The Great Auditorium, Ocean Grove
Photo Credit: Charlotte Pritchard



Historic Allaire Village, Farmingdale



Holland Ridge Farms, Cream Ridge

HISTORIC MONMOUTH CROSSROADS

This route traverses Monmouth County from the rural reaches of Millstone Township to the Raritan Bayshore near the Borough of Highlands showcasing four centuries of legacy and legend found along the County's early American Crossroads. This route showcases Monmouth County's contribution to the Crossroads of the American Revolution National Heritage Area which was established by Congress in 2006.

MOCO CULTURAL BYWAY

Spanning 41 municipalities, this is the tour for anyone seeking arts, culture, or entertainment. This region, which leads you through the County's arts corridor, features theaters, museums, historic districts, and recreation areas.

OCEAN DRIVE

Following the County's 27 miles of the Atlantic Ocean coastline, Ocean Drive begins and ends at two very important points of interest; the Manasquan Inlet and the Sandy Hook Lighthouse. Between these two iconic locales, the byway traverses through 15 shore towns including Monmouth County's Seven Presidents Oceanfront Park in Long Branch and the Gateway National Recreation Area at Sandy Hook. Travelers on this tour will have plenty of opportunities to stop and enjoy a stroll along any number of famous beachfront promenades and boardwalks or grab a bite to eat at a waterview restaurant.

SOUTH MONMOUTH EMERALD BYWAY

Beginning at the eastern edge of Upper Freehold Township within the Monmouth County panhandle, the South County Emerald Byway extends 23 ½ miles to the east-southeast, ending at the Manasquan River Inlet. Over this span across eight municipalities and seven sub-watersheds, the rich diversity of Monmouth County's history, natural environment, and scenery may be observed as the journey begins within the County's agricultural and rural heartland.

TWO RIVER TRI-WAY

The Two River region of Monmouth County refers to the area in and around the Navesink and Shrewsbury Rivers. This is the shortest tour in the byway series, as well as the only tri-way, meaning the route terminates in three locations. The Two River Tri-way provides historic context regarding the importance of the Two River peninsula in the overall countywide narrative.

UPPER FREEHOLD HISTORIC FARMLAND BYWAY

The lush rolling hills and farmland of Upper Freehold Township along with the historic downtown of the Borough of Allentown provide the rural background for this 24-mile loop tour through the furthest reaches of western Monmouth County. The history of this part of Monmouth County and its people can be traced back even earlier to the villages of the indigenous Lenape Native American tribes, along the banks of the local creeks, and the historic settlements of the European colonists.



DOWNTOWNS

Where Everything's Waiting for You

Unique shopping, award-winning restaurants, exciting nightlife, and Jersey charm and character make our downtown districts must-experience destinations.

Whether wandering solo, enjoying a romantic get-away, or reconnecting with family and friends, you'll discover everything you need – arts, entertainment, live music, shopping, divine dining, an endless diversity of events – in Monmouth County downtowns.



Photo Credit: Michael Scotto

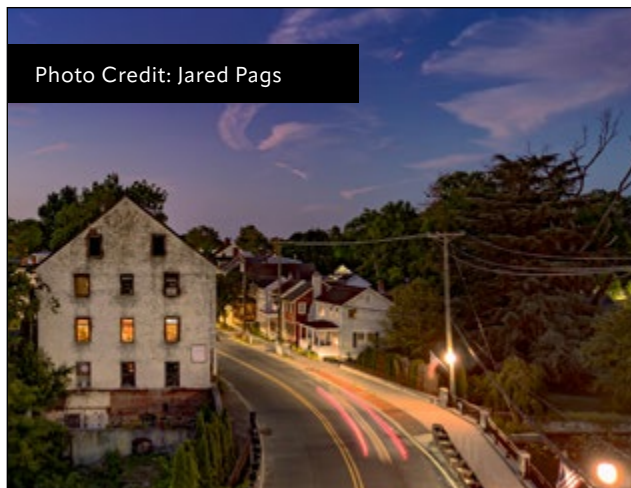


Photo Credit: Jared Pags

ALLENTOWN

Allentown is a community that values historic preservation and open space with small town values. A picturesque village nestled within the most western part of Monmouth County, Allentown is surrounded by a greenbelt made up of rich, lush farmland and features one of New Jersey's most charming and walkable Main Streets.

Spend the day in Allentown to explore the historic district with 225 homes on State and National registries, many that date prior to 1860. Shop unique retailers and service providers and enjoy a great meal in one of the many restaurants. Enjoy tranquil parks for fishing, walking, hiking, and more. Feast your eyes upon the rustic Old Mill, which dates back to 1855, sitting along the millpond.

CONTINUED ON PAGE 56



redbank

RiverCenter

Your Downtown

Stay informed of all Downtown Red Bank Happenings!

Subscribe to the

redbank beat

E-Newsletter!

Learn more at redbank.org



Coming up...





Recognizable Landmarks: Paramount Theater, Convention Hall and the iconic image of Tillie on the Wonder Bar in Asbury Park.
Photo credit: Connor Kane



ASBURY PARK

Home to a world-renowned music scene, beautiful beaches, and a foodie's paradise, Asbury Park is a small seaside city known for its sandy shore and beachfront boardwalk lined with shops, arcades, and cafes. The City's live music venues include the Stone Pony, which has hosted native New Jerseyans Bruce Springsteen and Jon Bon Jovi, Asbury Lanes and Wonder Bar. The Silverball Museum's video games, arcade games, and pinball machines date from the 1930s through the present. A downtown filled with history and creativity, Asbury has become a cultural hub. With a yearly calendar filled with events, there's always something to do including a visit to the Danny Clinch Transparent Gallery or taking in a great concert on the beach. Plan a visit during October and be part of the Asbury Park Zombie Walk, one of the most iconic events on the boardwalk that broke the Guinness World Record™ for World's Largest Gathering of Zombies.



ATLANTIC HIGHLANDS

A small Victorian town overlooking lower New York Bay with Manhattan in the distance offers an array of great restaurants, unique shops, theaters, and delicious ice cream. With the highest point on the eastern seaboard south of Maine, Atlantic Highlands' rolling hills offer beautiful water vistas. Once known as Portland Pointe, the Borough's waterfront is alive with activity for both the recreational boater and the promenade walker. Smodcastle Cinemas, a movie theater owned by Monmouth County native and movie actor, director, producer Kevin Smith, offers both cinema and an annual film festival.

CONTINUED ON PAGE 58

GREETINGS
FROM

ASBURY
PARK
N.J.

So much more than just Monmouth County's Favorite Beach!

AsburyParkChamber.com



PETTIT


"Preferred Dealer"

**RED BANK
MARINA**

TOHATSU
Authorized Dealer
"Service & Parts" 

261 West Front Street
Red Bank, NJ 07701
(732)741-3320
RedBankMarina@gmail.com



**A Great Experience
for the Whole Family**

Motorboats, Kayaks
& Pontoon Rentals
Bait & Tackle Shop
Marine Services
Summer Slips & Winter Storage

"One of New Jersey's BEST
crabbing spots"



Aerial View: Highlands
Photo credit: ShoreGrafx

BELMAR

Restaurant tours, seafood festivals, classic car shows, and a famous shipwreck off its shore make Belmar a community blessed with small town charm and an abundance of recreational activities on or off the mile-long boardwalk. Shops on Belmar's Ocean Avenue offer surfing gear, souvenirs, beach sundries, snacks, and fine dining while Belmar's Main Street features chic boutiques, art galleries, home decor specialists, coffee houses, and diverse and delicious eateries.

BRADLEY BEACH

This historic oceanfront community is known for its friendly residents and as a hub of markets, live music, and events. With a variety of restaurants, bars, and bakeries make sure to enjoy a meal or snack before heading to Riley Park for a movie screening or concert.

FREEHOLD

With always something to do, the County seat is an active-person's paradise. Known for its Victorian era homes and rich colonial history, Freehold is the place to shop, dine, discover, and explore. Whether going to Movie Night on Wednesdays, rocking out Thursdays to live music, or shopping at the Farmer's Market on Fridays, Gazebo and Performance Plaza is always buzzing with activity for locals and visitors alike. A year-round destination for parades and festivals, theater, and the arts, don't miss foodie favorites like the Fall Flavor of Freehold or the Food Truck Festival.

HIGHLANDS

With nearly 20 spectacular restaurants, nowhere else will you find such an eclectic selection of cuisine served in a half square mile. Highlands' famous waterfront "dock and dine" restaurants at its full-service Marina offer a variety of choices to dine indoors or out. Unique bed and breakfasts and lodging are available in town if you decide to extend your visit to one of the many culinary, beer, or holiday events which make Highlands a famous visitor destination.



CONTINUED ON PAGE 60

★ ★ Celebrate AMERICA'S 250TH BIRTHDAY! ★

oceanfest
at Long Branch

SATURDAY JULY 4TH, 2026

The Jersey Shore's **BIGGEST 4TH OF JULY PARTY!**

Mark this historic celebration on your calendar for the biggest, most patriotic event in OCEANFEST history!

FREE Live Music, Entertainment, Endless Food Vendors, Family Fun, and the most SPECTACULAR FIREWORKS you'll ever see!

Visit www.LongBranchChamber.org | Call: 732-222-0400

Interested in Sponsoring or Being a Vendor? Contact us at: [f](https://www.facebook.com/longbranchchamber) [i](https://www.instagram.com/longbranchchamber)
732-222-0400 • info@longbranchchamber.org




COUNTRY INN OF HAZLET

3360 Highway 35
Hazlet, NJ 07730

732-264-4142

www.countryinnofhazlet.com



KEYPORT

Dine, shop, stroll - nicknamed "The Pearl of the Bayshore", Keyport packs a lot of culture, fun, and food into a land area of 1.40 square miles. Established as a borough in 1908, Keyport's geographic location along the Raritan Bay has fostered numerous harbor facilities and a strong charter boat industry. The Keyport Waterfront Park and Waterfront Path offer grassy areas for passive recreation, an open-air pavilion, a pedestrian plaza, and a variety of sitting and planting areas steps from favored restaurants and watering holes. Events throughout the year, like the Keyport GardenWalk, make Keyport a must-visit on your list.

MANASQUAN

A great family town, Main Street in Manasquan offers much to see and do. Beyond the one-mile beach on the Atlantic Ocean and the Manasquan River for boaters and fisherman, downtown is rich with the Algonquin Theater, art galleries, restaurants, pubs, and many signature events. The "Meet Me on Main Street" concert series is a perennial favorite, as is the Independence Day Parade and fireworks.

OCEAN GROVE

"The good life" can be found in Ocean Grove where you can shop, dine, mingle, and explore the history of a town on the National Register of Historic Places. One square mile of natural beauty, Ocean Grove welcomes and delights visitors with tree-lined streets and the largest assemblage of authentic Victorian architecture in the Nation. A wonderful downtown to stroll or bike, events throughout the year highlight the many restaurants and sweet treat establishments. Be sure to continue your walk down to the ocean boardwalk and visit the Great Auditorium.



RED BANK

A vibrant town and the gateway to the Two River Peninsula, Red Bank offers fine arts and galleries, world class shopping and spas, gourmet and casual dining, performing arts, and the finest lodging. Offering both natural beauty along the Navesink River and historic architecture in the business district, the 2.2 square miles that is Red Bank is a place that *Smithsonian Magazine* named the 3rd best small town in America. Frequently called the Soho of New Jersey, venues for live music, film, and performing arts include the historic Count Basie Theatre and the Two River Theater.

SPRING LAKE

Turn-of-the-century architecture borders the wide, tree-lined streets surrounding a large lake where this delightful town takes its name. A visit to the Third Avenue Business District offers more than 60 shops and boutiques and a variety of gourmet restaurants. Cozy bed & breakfasts, inns, and hotels can be found in town and along the 2-mile stretch of beach and boardwalk, making Spring Lake the ideal location for a weekend getaway or vacation. The Spring Lake Community House Theatre and both Irish and Italian annual festivals help create lasting memories all year round. Be sure to take the self-guided walking tour and visit the footbridges that were recently restored.



Photo credit: Wally Bilotta

Keyport

NEW JERSEY



Keyport

NEW JERSEY

Join us for another year of great events!

- I Love Keyport & Taste of Keyport
- Keyport Classic Car Shows
- Keyport Garden Walk
- Woofstock
- Light Up the Bay
- Trunk or Treat
Duck Duck Jeep 4x4 Show
- Keyport 5K Run
- Bewitched
- Winterfest - Tree Lighting

Farmers Market
Spring through Fall
in Fireman's Park

visitkeyport.org

Keyport Bayfront Business Cooperative

732-739-5138

 Visit Keyport, NJ

 [visitkeyport](https://www.instagram.com/visitkeyport)



Toast to 2026 at 4JG's Vineyard



4JG's in Colts Neck is an estate style vineyard with a tradition of expert farming and wine making. Located on an historic farm in beautiful Colts Neck dating to the early 1700's!

The art of crafting award-winning wine for your enjoyment is our passion.

Visit our website for our 2026 schedule! Join us as we celebrate 250 years of history.

www.4jgswinery.com



4JG's Vineyard • 127 Hillsdale Rd • Colts Neck, NJ

New Jersey's finest...off our vines and into your glass!

BREWED
&
DISTILLED
in

MONMOUTH
COUNTY



• EST. 2022 •

BREWEDANDDISTILLEDINMONMOUTH.COM

Connect With Us!

Check us out on social media for the latest product drops & events from Monmouth County's craft beverage establishments.

Don't miss out—your next favorite craft beverage is just a follow away!



@MonmouthCountyTourism

Brewed & Distilled in Monmouth is an initiative created by the Monmouth County Board of County Commissioners focused on the promotion of the craft beverage establishments in Monmouth County.

Discover BREWERIES, WINERIES & DISTILLERIES AND A MEADERY!

Set out on a journey through Monmouth County's vibrant craft beverage scene, where every stop, and every sip, has a story waiting to be savored!

MONMOUTH COUNTY is home to more than 30 craft beverage makers, many of which welcome visitors with tasting rooms to explore. From the hoppy aromas of local breweries to the rich, velvety pours at area wineries and the carefully crafted spirits of artisan distilleries, there's something to satisfy every palate.

Across the County, these craft beverage destinations invite you to discover new favorites with every visit, offering seasonal releases, small-batch creations, and ever-evolving drink menus.

WINERIES & MEADERIES

4JG'S WINERY

Colts Neck, NJ

4JGsWinery.com

CREAM RIDGE WINERY

Cream Ridge, NJ

CreamRidgeWinery.com

BEACH BEE MEADERY

Long Branch, NJ

BeachBeeMeadery.com

FOX HOLLOW VINEYARDS

Holmdel, NJ

FoxHollowVineryard.com



Cream Ridge Winery



Fox Hollow Vineyards

DISTILLERIES

3BR DISTILLERY

Keyport, NJ

3BRDistillery.com

COLTS NECK STILLHOUSE

Colts Neck, NJ

ColtsNeckStillhouse.com

ASBURY PARK DISTILLING COMPANY

Asbury Park, NJ

APDistilling.com

WHEELHOUSE DISTILLING COMPANY

Neptune, NJ

WheelhouseDistillingNJ.com



Asbury Park Distilling Co.



Scan Here

To learn more, visit BrewedandDistilledinMonmouth.com and check out all the establishments in Monmouth County, as well as the local restaurants and businesses in the surrounding area.

BREWERIES



Bakes Brewing Co.



Birdsmouth Brewing



Twin Lights Brewing



Carton Brewing



Skinny Flowers Brewing Company



Screamin' Hill Brewery

ALTERNATE ENDING BEER CO.

Aberdeen Township, NJ

AlternateEndingBeerCo.com

ASBURY PARK BREWERY

Asbury Park, NJ

AsburyParkBrewery.com

BAKES BREWING CO.

Belmar, NJ

BakesBrewing.co

BEACH HAUS BREWERY

Belmar, NJ

BeachHausBeer.com

BELFORD BREWING COMPANY

Belford, NJ

BelfordBrewing.com

BIRDSMOUTH BREWING

Oceanport, NJ

BirdsmouthBeer.com

CARTON BREWING

Atlantic Highlands, NJ

CartonBrewing.com

ERRATIC FERMENTATIONS

Bradley Beach, NJ

erraticfermentations.myshopify.com

FIVE DIMES BREWERY

Red Bank, NJ

FiveDimesBrewery.com

KANE BREWING COMPANY

Ocean Township, NJ

KaneBrewing.com

LITTLE DOG BREWING COMPANY

Neptune City, NJ

LittleDogBrewing.com

SCREAMIN' HILL BREWERY

Cream Ridge, NJ

ScreaminHill.com

SEVEN SONS BREWING

Howell Township, NJ

SevenSonsBrewing.com

SKINNY FLOWERS BREWING COMPANY

Oceanport, NJ

SkinnyFlowersBrewing.com

SOURCE FARMHOUSE BREWERY

Colts Neck, NJ

SourceBrewing.com

TALL OAKS FARM + BREWERY

Farmingdale, NJ

TallOaksBrew.com

TRIUMPH BREWING COMPANY

Red Bank, NJ

TriumphBrewing.com

TWIN LIGHTS BREWING

Tinton Falls, NJ

TwinLightsBrewing.com

WILD AIR BEERWORKS

Asbury Park, NJ

WildAirBeer.com



Homewood Suites by Hilton Eatontown Completes \$5 M Renovation

The renovation includes fully refreshed guest suites, featuring contemporary furnishings, upgraded kitchens, and enhanced workspaces. The lobby and public areas have been redesigned to create a warm and inviting atmosphere, while the fitness center and outdoor spaces have been upgraded to meet the evolving needs of today's travelers.

*Discounted Group rates available for blocks of 10 or more rooms. Please contact the Sales Department for further information.

CONTACT US

Tel: 732-380-9300

Fax: 732-380-1234

www.eatontown.homewoodsuites.com

LOCATION

4 Industrial Way East
Eatontown, NJ 07724

SALES CONTACT

Preeti Bhandare / DOSM

Tel: 732-676-5004

preeti.bhandare@hilton.com

Your downtime begins here.

- Spacious renovated suites with fully equipped upgraded kitchens, full-size refrigerators and separate sleeping and living areas
- Free Wi-Fi throughout the hotel
- Free hot breakfast buffet
- Complimentary Parking
- Welcome Home Managers Reception*
- Online check-in
- 24-hour Suite Shop convenience store
- Business Center
- Guest laundry facilities
- Outdoor Seasonal Swimming pool
- Outdoor grill & Fire pit
- 24-hr Fitness Center
- Featuring our new Electric Car Charging Station for in-house guests

*Wednesday Nights, subject to state and local laws.

The Art of ENTERTAINMENT



Spring Lake Theatre, Spring Lake

A culture of creativity permeates Monmouth County with art, music, literature, live performances, festivals, galleries, and museums. With more than 19 venues offering live music, theater, and performances and more than 75 art groups, galleries, and museums there is an eclectic mix of every type of artistic expression including the arts of cooking, photography, dance, and mixology. You can see it in the murals and paintings in our towns, at the many classes and instructional opportunities for locals and visitors alike.

Influenced and inspired by the same sights and sounds you can experience for yourself, our towns have birthed not only great people but great works that speak to what it means to be human. Music legends Count Basie, Bruce Springsteen, and Jon Bon Jovi all started in our communities, as did actors Jack Nicholson and Danny DeVito. Author Mary Higgins Clark

called Spring Lake home and prolific author Norman Mailer was born in Long Branch. They are only a few of the many talented, exciting artists who have, or still, call Monmouth County home.

Don't be surprised if during a stroll through Red Bank you bump into a celebrity who is performing at the Count Basie Center for the Arts. Everyone from Frank Sinatra to James Taylor to Zac Brown Band and Led Zeppelin have performed at the PNC Bank Arts Center in Holmdel or Convention Hall in Asbury Park. Come see for yourself all the talent around us and share in all the excitement – the show starts with you.

In the following pages you'll find examples of just some of the many theaters, art galleries, museums, and music venues throughout Monmouth County.

For more information, visit MonmouthCountyTourism.com

MANASQUAN,
NEW JERSEY

ALGONQUIN

VOTED "BEST THEATRE"
ON THE JERSEY SHORE

ASBURY PARK PRESS

732.528.9211 ● AlgonquinArts.org

ARTS THEATRE



ENTERTAINMENT VENUES

ASBURY PARK THEATER COMPANY
asburyparktheatercompany.org

ALGONQUIN ARTS THEATRE
algonquinarts.org

AXELROD PERFORMING ARTS CENTER
axelrodartscenter.com

BELL THEATER
belltheater.org

BROOKDALE PERFORMING ARTS
CENTER
brookdaleecc.edu/pac

CENTER PLAYERS
centerplayers.org

COUNT BASIE CENTER FOR THE ARTS
thebasie.org

FIRST AVENUE PLAYHOUSE
firstavenueplayhouse.org

HOLMDEL THEATRE COMPANY
holmdeltheatrecompany.org

JERSEY SHORE ARTS CENTER
jerseyshoreartscenter.org

LAUREN K. WOODS THEATRE
monmouth.edu/mca/woods-theatre

NEW JERSEY REPERTORY COMPANY
njrep.org

POLLAK THEATRE
monmouth.edu/mca/pollack-theatre

SHORE THING THEATER
shorethingtheater.com

SPOTLIGHT PLAYERS
spotlightplayers.org

SPRING LAKE THEATRE
springlaketheatre.com

THE PREMIER THEATRE COMPANY
premiertheatre.com

TWO RIVER THEATER
tworivertheater.org

THE VOGEL
thebasie.org/venue/the-vogel

For more venues, visit MonmouthCountyTourism.com



THE Arts

Wooden Walls Public Art Project, Asbury Park
Photo credit: Connor Kane

MONMOUTH ARTS monmoutharts.org

Serving as the County's official arts agency for more than 50 years, Monmouth Arts is a nonprofit made up of artists, arts organizations, creative businesses, and supporters that nurture the vibrant arts community and enhance life in Monmouth County.

MONMOUTH MUSEUM monmouthmuseum.org

Celebrating over 60 years, the Monmouth Museum is a 15,000-square-foot museum with two wings dedicated to children and two galleries with rotating art, history, and science exhibits. The grounds also feature a garden and outdoor spaces to enjoy. Educational programs at the Museum include guided tours, lectures, workshops, craft activities, and bus trips.



MIDDLETOWN ARTS CENTER middletownarts.org

The Middletown Arts Center (MAC) is an award-winning, state-of-the-art facility dedicated to bringing quality arts programming and events to New Jersey. The MAC offers entertaining and educational events throughout the year for families and individuals of all ages and abilities. With 23,000 square feet of space, the MAC accommodates programming of all kinds including dance socials, art exhibits, concerts, theatrical performances, classes, workshops, day camps, and galas.

WOODEN WALLS PUBLIC ART PROJECT woodenwallsproject.com

A perennial favorite has been the Wooden Walls public art installation, located along the Asbury Park boardwalk. Artists from across the globe have contributed to the Wooden Walls mural series since 2015. The Project is a collaborative initiative that brings art to Asbury Park to enrich the socio-cultural and socio-economic landscape in a thoughtful way. By creating a conversation with local, national, and international artists, attention is drawn to the creative spirit that is fundamental to Asbury Park.

For more venues & galleries, visit
MonmouthCountyTourism.com



Nestled in the charming town of Spring Lake, you'll find the Spring Lake Community House and Theatre, a historic gem that celebrated its 100th year in 2023. This remarkable place always offers something new to explore, from captivating theater performances of Broadway caliber and enriching children's programs to local art exhibitions in the Upper Gallery and memorable lawn parties. It is also home to the Spring Lake Library and a meeting place for multiple community organizations.



Coming up at the Spring Lake Theatre

JUL
2026

Me and My Girl

AUG
2026

Bye Bye Birdie

OCT
2026

The Addams Family

DEC
2026

Scrooge!

FEB
2026

Mean Girls

APR
2026

Seussical

Visit springlaketheatre.com for tickets

MUSEUMS



Monmouth Museum, Lincroft
Photos Courtesy of @seek.discover.play IG



ALLEN HOUSE

Shrewsbury
monmouthhistory.org

HISTORICAL SOCIETY OF OCEAN GROVE

Ocean Grove
historicalsocietyofoceangrove.org

INFOAGE SCIENCE AND HISTORY MUSEUMS

Wall
infoage.org

JEWISH HERITAGE MUSEUM OF MONMOUTH COUNTY

Freehold
jhmomc.org

MONMOUTH COUNTY HISTORICAL ASSOCIATION

Freehold
monmouthhistory.org

MONMOUTH MUSEUM

Lincroft
monmouthmuseum.org

THE NEW JERSEY MUSEUM OF TRANSPORTATION

Pine Creek Railroad at Allaire State Park
Wall
njmt.org

THE PARANORMAL MUSEUM

Asbury Park
paranormalbooksnj.com

TOWNSHIP OF OCEAN HISTORICAL MUSEUM

Ocean
oceanmuseum.org

T. THOMAS FORTUNE CULTURAL CENTER

Red Bank
tthomasfortuneculturalcenter.org



Kate Balwin in Agatha Christie's *Murder on the Links*. Photo Credit: Andy Henderson
Jasmin Walker in *Dial M for Murder*. Photo credit: T. Charles Erickson
Okieriete Onaodowan in *The Monsters*. Photo credit: T. Charles Erickson



**IT'S ALL
HAPPENING
RIGHT HERE.**

**LEARN MORE
& PURCHASE TICKETS**

TWORIVERTHEATER.ORG

BOX OFFICE 732.345.1400

TWO RIVER THEATER
21 BRIDGE AVE
RED BANK, NJ 07701



The Stone Pony Summer Stage in Asbury Park
Photo credit: Connor Kane

MUSIC

In Monmouth County, live music is woven into the local rhythm, spilling out from beach bars in Asbury Park to intimate venues scattered from Red Bank to the Bayshore. With a packed calendar year-round, it's easy to stumble into anything from indie sets to classic rock tributes, making the County feel less like a destination and more like an ongoing soundtrack.

ASBURY LANES

Asbury Park
asburylan.es.com

Asbury Lanes is a legendary concert venue, historic landmark, and vintage bowling alley located just two blocks away from the beach in Asbury Park. You can find live concerts featuring both national and local talent, bowl with your friends, and visit the diner located on premise - a Jersey classic!

DANNY CLINCH TRANSPARENT GALLERY

Asbury Park
transparentclinchgallery.com

Danny Clinch is a world-renowned photographer, author, and director most famous for his photographs of musicians and co-founding the Sea.Hear.Now Festival. The Transparent Gallery highlights his fine-art prints and offers live, ticketed music events.

MONMOUTH CIVIC CHORUS

monmouthcivicchorus.org

A community chorus in Monmouth County often cited as one of the best in the Northeast. Hand-picked professional instrumentalists accompany the chorus and play orchestral works. The Monmouth Civic Chorus performs throughout the County, but also throughout the world since 1949. Its most memorable performances include those at St. Peter's Basilica at the Vatican in Rome and St. Stephen's Cathedral in Vienna.

MONMOUTH SYMPHONY ORCHESTRA

monmouthsymphony.org

The Monmouth Symphony Orchestra has brought live classical music to the New Jersey Shore since 1948. Having started as the Spring Lake Sinfonietta, the orchestra performs in numerous locations throughout the metropolitan area.



Danny Clinch at the Transparent Gallery in Asbury Park



PNC Bank Arts Center, Holmdel

PNC BANK ARTS CENTER

Holmdel

pncbankartscenter.com

The PNC Bank Arts Center is ranked among the top five most successful amphitheatres in the Country. It has a mega seating capacity of 17,500 with 7,000 seats and the grass area which can hold about 10,500. Designed by noted modernist architect Edward Durell Stone, the Arts Center features open sides covered by a 200-foot saucer-like roof. Concerts are held from May through September featuring 45-50 different events of many types of musical styles.

THE GREAT AUDITORIUM

Ocean Grove

oceangrove.org

The organ in The Great Auditorium in Ocean Grove dates back to 1894 and is said to have a sound like no other. It is one of the largest pipe organs in the world, it has 202 ranks, 10 divisions, more than 12,000 pipes, and is powered by five turbines.

HOUSE OF INDEPENDENTS

Asbury Park

houseofindependents.com

The house Asbury built. House of Independents brings Asbury Park's ever-growing community of creative thinkers a venue that reflects their originality and versatility.

THE STONE PONY

Asbury Park

stoneponyonline.com

Celebrating 50 years and counting, The Stony Pony is a historic live music venue in Asbury Park that opened in 1974. It gained fame for hosting local musicians, including Bruce Springsteen, Southside Johnny and Steven Van Zandt. The venue is world renowned and has become a staple of the New Jersey music scene, hosting legendary acts and up-and-coming artists alike. This venue also features outdoor concerts on The Summer Stage.

WONDER BAR

Asbury Park

wonderbarasburypark.com

Known for its live music and colorful paint job, the Wonder Bar is all about having fun. From the tunes to the tiki bar, a good time is a guarantee. And you're also just steps from the Asbury Park Boardwalk.

PARKSTAGE

Freehold

parkstage.org

ParkStage is a large-scale, open-air performance venue set to spend its summer at the East Freehold Park Showgrounds. It is also part of the celebrations surrounding America's 250th birthday celebration, and the Count Basie Center's own 'Centennial Celebration.'

NETFLIX IS COMING!



Left to right: Monmouth County Commissioner Ross F. Licitra, Monmouth County Commissioner Director Thomas A. Arnone, and Monmouth County Commissioner Erik Anderson at Netflix's closing of the purchase of the Mega Parcel at Fort Monmouth.

Netflix has purchased the former 300-acre Fort Monmouth U.S. Army installation in Eatontown and Oceanport to create one of the largest production facilities in the world. The company will build a state-of-the-art production facility with 12 sound stages to produce TV series and films in Monmouth County. New Jersey is home to many productions, including Apple TV's *Severance*, which is filmed at Bell Works in Holmdel.



Photo courtesy of Netflix

FILM FESTIVALS

GARDEN STATE FILM FESTIVAL

March 26 - March 29, 2026 | Asbury Park

gsff.org

The festival, which is held annually every March, celebrates independent films and gives a forum for filmmakers to network with other industry pros. Since its inception, industry notables such as Glenn Close, Christopher Lloyd, Batman producer Michael Uslan, Austin Pendleton, Kurtwood Smith, Clarence Clemons, Bruce Springsteen, Lainie Kazan, Diane Ladd, Laura Dern, Bebe Neuwirth, Armand Asante, Sally Struthers, the late Ed Asner, James Gandolfini and many others have lent their support.

MONMOUTH FILM FESTIVAL

May 29-31, 2026 | Bell Works | Holmdel

monmouthfilm.org/festival

The international Monmouth Film Festival is now hosted at the iconic Bell Works in Holmdel, with red carpet moments, global storytelling, and unparalleled access to the filmmaking community. Meet with top-tier independent filmmakers, industry professionals, and film enthusiasts from around the world for a weekend of high-caliber screenings, exclusive premieres, and meaningful industry connection. Also on hand are curated panels of experts, workshops, and the Reel Tech Digital Film Expo.

FILMONEFEST

July 18, 2026 | Atlantic Highlands

aharts.org/filmonefest

The Jersey Shore's preeminent showcase for all forms of short film under two minutes in length. Submissions are accepted from anywhere in the world and the summer festival is a free, family-friendly event. The best short films from around the world are shown against the backdrop of the Atlantic Highlands Marina, overlooking New York City.

INDIE STREET FILM FESTIVAL

August 17-23, 2026 | Red Bank

indiestreetfilmfestival.org

A regional film and arts festival that combines its curated film selections with connective community events in order to celebrate human creativity and storytelling. Throughout the 7-day interactive festival, both filmmakers and attendees enjoy panel discussions, live art, music, education and networking events.



THE JERSEY SHORE'S Hometown Team



BLUECLAWS.COM

SCAN HERE FOR TICKETS



FROM JERSEY SHORE TO GLOBAL ROAR

This summer, the world is coming to New Jersey.

But the real celebration is happening right here in Monmouth County.

From beachside establishments to downtown streets, local businesses and communities are turning every match into a moment—watch parties, live music, and nonstop energy.



MonmouthCountyTourism.com



Farm Fresh Adventures

With over 8 million tulips, you really need to see it to believe it. Holland Ridge Farms is home to over eight million tulips each spring and millions of sunflowers and other mixed flowers each fall. Holland Ridge Farms is the most popular u-pick flower farm in the world, and it's right here in Monmouth County!

Experience agritourism in Monmouth County with scenic farms, local wines, and hands-on harvest fun for all ages.

Pick Your Own

Experience the beauty of the seasons firsthand at a local u-pick farm, where springtime brings a breathtaking display of tulips. In the fall, farms transform into a golden sea of sunflowers, perfect for photos and family outings. Throughout the County, visitors can enjoy pick-your-own experiences featuring pumpkins, raspberries, apples, fresh flowers, and more—making it easy to take a piece of the harvest home with you.

Wineries

Sip and savor the flavors of Monmouth County at local favorites like 4JG's Vineyard, Cream Ridge Winery, and Fox Hollow Vineyards. Each offers a unique atmosphere, from relaxed tastings to lively seasonal events. Whether you're a wine enthusiast or simply looking for a scenic afternoon, these vineyards provide the perfect setting to unwind.

Corn Mazes & Fall Fun

Autumn in Monmouth County is filled with classic farm experiences. Challenge yourself in a winding corn maze, explore pumpkin patches, and wander through vibrant sunflower fields. Don't forget to treat yourself to seasonal favorites like fresh apple cider and warm cider doughnuts—an essential fall tradition.

Farmers Markets

Fresh, local, and full of flavor—Monmouth County's farmers markets are a must-visit. Browse a colorful selection of in-season fruits and vegetables, homemade goods, honey, flowers, and more. These markets offer a welcoming way to connect with local growers and experience the region's agricultural bounty.



To learn more about the wide assortment of agricultural products, businesses, and experiences throughout Monmouth County, visit GrownInMonmouth.com.

Proving Ground Waterfront Dining



Proving Ground is located on the Shrewsbury River in Highlands, NJ

We are open for lunch, brunch on Sundays, dinner, cocktails & more!

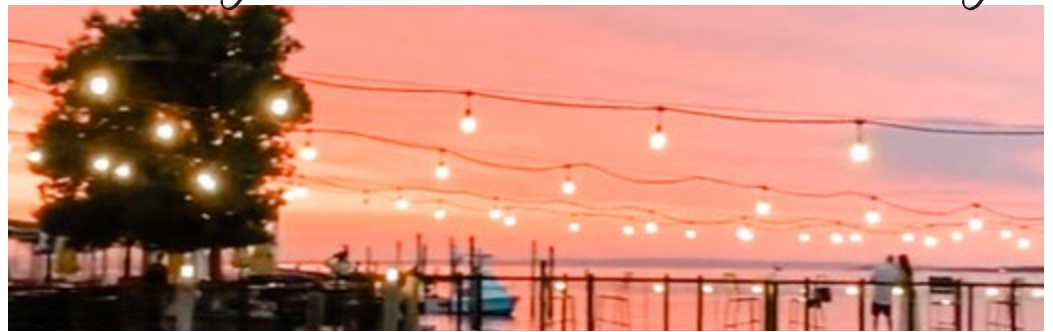
Live Music
Dock & Dine
2 outdoor bars
Indoor & Outdoor Seating

Let us Host Your Next Special Event:

Birthdays, Showers, Christenings, Anniversaries, Engagements, Bachelor & Bachelorettes ... & more!



For more info Scan Here!



Waterfront Dining at its Finest

Lunch - Dinner - Brunch - Tiki Bar - Live Music

56 Shrewsbury Ave. Highlands NJ 07732
(732)-872-2266

THE ULTIMATE PREVIEW *of* Upcoming Local Events

There's always something happening in Monmouth County!

Concerts, culinary and cultural festivals, craft markets, outdoor movies, fairs, flea markets, farmer's markets, film festivals, car shows, races and competitions, holiday celebrations, fireworks and so much more.

Join us and be a part of our friendly local culture!

MONMOUTH PARK OPENING DAY

May 9

Monmouth Park,
Oceanport, NJ

monmouthpark.com

ASBURY PARK SPRING BAZAAR

May 9 & 10

Convention Hall,
Asbury Park, NJ

asburyparkbazaar.com

NJ SEAFOOD FESTIVAL

May 15-17

Silver Lake Park, Belmar, NJ

belmar.com

FOOD TRUCK & MUSIC FESTIVAL

May 23

Keyport, NJ

keyportonline.com

SEAPORT CRAFT SHOW

May 24

Huddy Park, Highlands, NJ

highlandsnj.com

SPRING MARKET

May 30

Great Auditorium,
Ocean Grove, NJ

oceangrovenj.com

SPRING LAKE HISTORICAL SOCIETY HOUSE TOUR

June 4

Spring Lake, NJ

springlakehistoricalsociety.org

BAYSHORE GREEK FESTIVAL

June 4-7

Holmdel, NJ

greekfestivalholmdel.com

ALLAIRE ARTS FESTIVAL

June 6

Historic Village at Allaire,
Farmingdale, NJ

allairevillage.org

KEYPORT GARDENWALK

June 6

Keyport, NJ

keyportgardenclub.com

NEW JERSEY IRISH FESTIVAL

June 7

Monmouth Park,
Oceanport, NJ

monmouthpark.com

JUNETEENTH CELEBRATION

June 7

1 East Main Street,
Freehold, NJ

mcdiversityalliance.com

JERSEY PRIDE PARADE & FESTIVAL

June 7

Bradley Park,
Asbury Park, NJ

jerseypride.org



FC MONMOUTH

Count Basie Park, Red Bank, NJ | FCMonmouth.com

Representing Monmouth County across the nation, FC Monmouth has men's and women's soccer teams competing in the top semi-professional leagues in the country.

Men's Home Matches | 5/1, 5/9, 6/6, 6/20, 6/27 & 7/10

Women's Home Matches | 5/28, 6/20, 6/27 & 7/11

ASBURYFEST

June 12 - 14

Bradley Park,
Asbury Park, NJ
asburyparkchamber.com

IRISH FESTIVAL

June 13

Spring Lake, NJ
visitspringlake.com

DOWNTOWN ART WALK

June 13

Main Street,
Manasquan, NJ
womansclubofmanasquan.org

NORTH TO SHORE FESTIVAL

June 13-28

Asbury Park, NJ
northtoshore.com

STARS & STRIDES 5K

June 14

Bell Works, Holmdel, NJ
monmouthnj250.org

CLASSIC CAR SHOW

June 20

First Avenue,
Atlantic Highlands, NJ
ahchamber.org



OCEANFEST

July 4

Long Branch Oceanfront Promenade,
Long Branch, NJ

longbranch.org

The largest Independence Day celebration anywhere in New Jersey! An all-day, family friendly festival that caps off with the most spectacular fireworks display you'll see anywhere along the Jersey coast.

RED BANK 5K CLASSIC

June 20

Red Bank, NJ
redbankclassic.com

FAERIE FESTIVAL

June 20-21

Allentown, NJ
allentownnj.com

BATTLE OF MONMOUTH REENACTMENT

June 20 & 21

20 State Route 33,
Manalapan, NJ
friendsofmonmouth.org

TASTE OF HIGHLANDS

June 27

Highlands, NJ
highlandsnj.com

THE CLASSIC CAR SHOW & OLDIES DAY

June 28

Monmouth Park,
Oceanport, NJ
monmouthpark.com

FAMILY FUN FEST & FIREWORKS

July 4

Keansburg, NJ
keansburgnj.gov

PARADE, BEACH CONCERT & FIREWORKS

July 4

Manasquan, NJ
manasquan-nj.gov

OCEANFEST

July 4

Long Branch Oceanfront Promenade, Long Branch, NJ
longbranch.org

CLASSIC CAR SHOW

July 16

West Front Street,
Keyport, NJ
visitkeyport.org

PRIDE FEST IN THE PARK

July 11

Huddy Park,
Highlands, NJ
highlandsnj.com

HASKELL DAY

July 18

Monmouth Park,
Oceanport, NJ
monmouthpark.com

FILMONEFEST

July 18

Atlantic Highlands Marina,
Atlantic Highlands, NJ
aharts.org

Photo Credit: Skyview Media



SEA.HEAR.NOW FESTIVAL

September 19-20

Asbury Park, NJ

SeaHearNowFestival.com

Two days of music with more than 25 bands on three stages: two in the sand and one in the park, all on the iconic Asbury Park Waterfront. Headlining this year is Mumford & Sons and The Strokes, plus Offspring, Chaka Khan, Goo Goo Dolls, Moby, Pixies, Shaggy and Ziggy Marley, among many others!

MONMOUTH COUNTY FAIR

July 22-26

East Freehold Showgrounds,
Freehold, NJ

monmouthcountyparks.com

ITALIAN FESTIVAL & WINE TASTING

July 25 & 26

Monmouth Park,
Oceanport, NJ

monmouthpark.com

CLAMFEST

July 31 – August 2

Huddy Park, Highlands, NJ

highlandsnj.com

SEA GIRL 5K

August 1

The Plaza, Sea Girt, NJ

seagirt5k.com

LATIN FESTIVAL

August 2

Monmouth Park,
Oceanport, NJ

monmouthpark.com

ITALIAN FESTIVAL

August 5-9

Joe Palaia Park,
Oakhurst, NJ

iaato.com

SIDEWALK SALE

August 7-9

Red Bank, NJ

redbank.org

SURF & TURF SEAFOOD FESTIVAL

August 15 & 16

Monmouth Park,
Oceanport, NJ

monmouthpark.com

LONG BRANCH JAZZ & BLUES FESTIVAL

August 29

Green Lawn & Promenade,
Long Branch, NJ

longbranch.org

BELMAR 5 MILE RUN

September 5

Belmar, NJ

belmar.com

BBQ & CRAFT BEER FESTIVAL

September 5-7

Monmouth Park,
Oceanport, NJ

monmouthpark.com

FOOD TRUCKTEMBERFEST

September 12

Monmouth Park,
Oceanport, NJ

monmouthpark.com

SAN GENNARO FESTIVAL

TBD

Main Street,
Belmar, NJ

belmar.com

BRIELLE DAY CRAFT FAIR

September 12

Brielle Park,
Brielle, NJ

thewomansclubofbrielle.org

FALL BREW BY THE BAY

September 12

Seafarer Bar,
Highlands, NJ

highlandsnj.com



248TH ANNIVERSARY OF THE BATTLE OF MONMOUTH JUNE 20-21

Manalapan, NJ

FriendsOfMonmouth.org

Hundreds of troops encamp at the park and recreate scenarios of the battle over the weekend. There are also numerous presentations and lectures, tours of the camps, and sutler area open to the public.

ITALIAN FESTIVAL

September 19

Downtown Business District,
Spring Lake, NJ

visitspringlake.com

SEA.HEAR.NOW FESTIVAL

September 19-20

Asbury Park, NJ

seahearnowfestival.com

BRITISH CAR SHOW

September 26

Ocean Grove, NJ

oceangrovenj.com

OKTOBERFEST

October 3

Veterans Park,
Highlands, NJ

highlandsnj.com

OKTOBERFEST

October 4

West Main Street,
Freehold, NJ

downtownfreehold.com

FALL FLAVOR OF FREEHOLD

October 13 & 14

Freehold, NJ

downtownfreehold.com

OKTOBERFEST

October 10

Edmund Wilson Plaza,
Red Bank, NJ

redbank.org

FALL HARVEST FESTIVAL

October 10

Ocean Grove, NJ

oceangrovenj.com

FALL FESTIVAL

October 10-11

Main Street,
Allentown, NJ

allentownnj.com

FALL TASTE OF HIGHLANDS

October 10

Highlands, NJ

highlandsnj.com

HOLIDAY HOUSE TOUR

December 5

Ocean Grove, NJ

oceangrovenj.com

HOLIDAY MADE IN MONMOUTH

December 12

Brookdale Community
College, Lincroft, NJ

madeinmonmouth.com

The events listed are just the tip of the iceberg!

You can find more events – all year round – at
MonmouthCountyTourism.com or by scanning the QR code.

To ensure accuracy, please check the event's website prior to attending.



Lighting The Way



Photo Credit: Mick Zdonyi

TWIN LIGHTS

Highlands

twinlightslighthouse.org

Twin Lights, once known as the Navesink Lighthouse, has stood watch over the waters of New Jersey since 1828. With a view like none other, it sits atop the highest elevation on the Atlantic Coast. On a clear day it seems as though the view goes on forever, taking in all of Sandy Hook, the ocean, the bay, the New York Skyline, the Verrazzano-Narrows Bridge, and parts of Coney Island. Renowned for its history and innovation, Twin Lights is both a State and National Historic Landmark. For generations, Twin Lights was the brightest light on the entire Eastern Seaboard, with the first Fresnel lens lighting the way for mariners and illuminating the night sky. In 1949, the Lighthouse was decommissioned by the United States Coast Guard due to the advent of radar, sonar, and long-range navigation. The towers continued to be illuminated to aid private boats and ships. To learn all about the lighthouse's history, visit the Twin Lights Museum. It is hailed as one of the best small museums in New Jersey with more than \$2 million in historic flags and patriotic artifacts.

Spermaceti Cove Life-Saving Station, built in 1894, housed the men who risked their lives saving shipwrecked victims

and is listed on the National Register of Historic Places. In 1915, the United States Life-Saving Service became part of the U.S. Coast Guard. The Station was used by the Coast Guard until the late 1940s. The National Park Service (NPS) converted it into a visitor center, which was used until it was damaged by Hurricane Sandy.

FUN FACT



In 1893, the Pledge of Allegiance is presented as the national oath of loyalty by its author, Francis Bellamy, during the Liberty Pole dedication ceremony at the Twin Lights Lighthouse. It marks the first time the Pledge is given at an official patriotic event.



SANDY HOOK LIGHTHOUSE
GATEWAY NATIONAL RECREATION AREA

Highlands

[nps.gov/gate](https://www.nps.gov/gate)

First lit on June 11, 1764, Sandy Hook Lighthouse is the oldest surviving working lighthouse in what is now the United States. This National Historic Monument was financed by a lottery and built by the Colony of New York to keep ships safe as they passed by Sandy Hook on their way to and from New York Harbor. During the American Revolution, the British captured the Lighthouse and held it through the end of the War in 1783. During that time, the Continental Army tried to overtake it, but its thick walls protected it from cannonball fire or being destroyed. The Lighthouse was fortified again during the War of 1812 when the shortlived Fort Gates was built. Now operated by the U.S. Coast Guard, the Lighthouse is active and remains lit 24-hours-a-day.



SEA GIRT LIGHTHOUSE

Sea Girt

[seagirtlighthouse.com](https://www.seagirtlighthouse.com)

The Sea Girt Lighthouse flashed its first light December 10, 1896, and became the last live-in lighthouse built on the Atlantic Coast. The beacon, which could be seen 15 miles at sea, guided countless mariners in their journeys and contributed to the State's economy. Built to illuminate a blind spot midway in the 38½-mile stretch between Navesink Lighthouse (Twin Lights) to the north and Barnegat Lighthouse to the south, it also served as a landmark for nearby Sea Girt Inlet and Wreck Pond. By the early 1900s, there were some 40 light stations along New Jersey's 130-mile coastline. Just over half of them survive, but only 11 of the original lighthouses, including Sea Girt, are open to the public. In mid-1921, Sea Girt became the first land-based light station equipped with a radio beacon navigation system, designed to enable mariners to navigate into New York Harbor and through local waters in poor conditions such as heavy fog. The Lighthouse was restored in 1981 and is in use 200 days of the year.

WHERE TO FIND **EMERGENCY CARE** IN MONMOUTH COUNTY

YOU NEVER KNOW when an emergency might arise, but rest assured, Monmouth County has you covered. With five hospitals ready to provide top-quality care, you can feel confident that help is always nearby. For your furry family members, there are also two 24-hour veterinary hospitals available to assist in any pet-related emergency. In case of a medical emergency, it's crucial to call 911 immediately for prompt and professional assistance. Your safety and well-being are a top priority in Monmouth County.

24-HOUR EMERGENCY CARE

BAYSHORE MEDICAL CENTER

727 North Beers Street, Holmdel, NJ 07733

732-739-5900 | hackensackmeridianhealth.org

CENTRASTATE MEDICAL CENTER

901 West Main Street, Freehold, NJ 07728

732-431-2000 | centrastate.com

JERSEY SHORE UNIVERSITY MEDICAL CENTER

1945 Route 33, Neptune, NJ 07754

732-775-5500 | hackensackmeridianhealth.org

MONMOUTH MEDICAL CENTER

300 Second Avenue, Long Branch, NJ 07740

732-222-5200 | rwjbh.org/monmouth-medical-center

RIVERVIEW MEDICAL CENTER

1 Riverview Plaza, Red Bank, NJ 07701

732-741-2700 | hackensackmeridianhealth.org



TOP
Left: Bayshore Medical Center
Right: CentraState Medical Center

MIDDLE
Left: Jersey Shore Medical Center
Right: Monmouth Medical Center

BOTTOM
Left: Riverview Medical Center

24-HOUR EMERGENCY VETERINARY CARE

GARDEN STATE VETERINARY SPECIALISTS

246 Industrial Way West, Eatontown, NJ 07724

732-922-0011 | gsvs.org

RED BANK VETERINARY HOSPITAL

100 Schulz Drive, Red Bank, NJ 07701

732-747-3636 | redbankvet.com



Advanced Specialty & 24/7 Emergency Veterinary Care



Our Services Include:

- 24/7 Emergency & Critical Care
- Acupuncture
- Anesthesiology & Pain Management
- Avian & Exotics
- Cardiology
- Dentistry & Oral Surgery
- Diagnostic Imaging
- General Practice
- Hemodialysis
- I-131
- Internal Medicine
- Interventional Radiology & Endoscopy
- Neurology & Neurosurgery
- Oncology (Medical & Radiation)
- Ophthalmology
- Physical Rehabilitation
- Surgery

Red Bank Veterinary Hospital

Open 24/7, 365 days a year for emergency care

(732) 747-3636 | redbankvet.com



100 Schulz Drive, Red Bank, NJ 07701

(Scan the QR code for directions) →





**MONMOUTH COUNTY, NJ IS A FERRY,
TRAIN, BUS, OR SHORT DRIVE AWAY
FROM NEW YORK CITY.**

Getting Here is Easy

ROAD TRIP

The Garden State Parkway runs north/south through the County located between mile/exit 98 (Belmar and Spring Lake) and 117 (Keyport/Aberdeen). Interstate 195 runs east/west through the County, connecting the Garden State Parkway to the New Jersey Turnpike. Monmouth County sits about 45 miles from New York City, 60 miles from Philadelphia, 75 miles from Atlantic City, 125 miles from Lancaster, PA, 190 miles from Washington, D.C., and 260 miles from Boston. You can choose to drive your own car, rent a car, or take the bus. Bus lines provide service to Monmouth County from Newark, Jersey City, and Midtown and Lower Manhattan. Local bus service is available throughout the County. There is also limited bus service to southern Monmouth County available from Philadelphia.

NJ Transit

[njtransit.com](https://www.njtransit.com)

Academy Bus

[academybus.com](https://www.academybus.com)





Highlands, NJ
Photo credit: ShoreGrafx



Seastreak Ferry Service Map from New York Harbor and Monmouth County

TAKE THE TRAIN

The New Jersey Transit North Jersey Coast Line connects Midtown Manhattan's New York Penn Station and Newark Penn Station to Manasquan, Spring Lake, Belmar, Bradley Beach, Asbury Park, Allenhurst, Elberon, Long Branch, Monmouth Park (seasonal), Little Silver, Red Bank, Middletown, Hazlet, and Aberdeen-Matawan.

NJ Transit
njtransit.com

Amtrak
amtrak.com

COME BY SEA

Set your course for our Shore as the numerous marinas in Monmouth County can accommodate vessels of all sizes. If you prefer to let someone else steer the ship, service to and from New York and Massachusetts is available.

Seastreak Ferry
seastreak.com

TAKING TO THE SKIES

Conveniently located near four airports, you can literally travel almost anywhere in the world to and from Monmouth County. Leave plenty of time when traveling to any of the airports as traffic will depend on season and the time of day. Allow anywhere from 45 minutes to two hours depending on which location you choose.

Newark Liberty International Airport (EWR)
newarkairport.com

Philadelphia International Airport (PHL)
phl.org

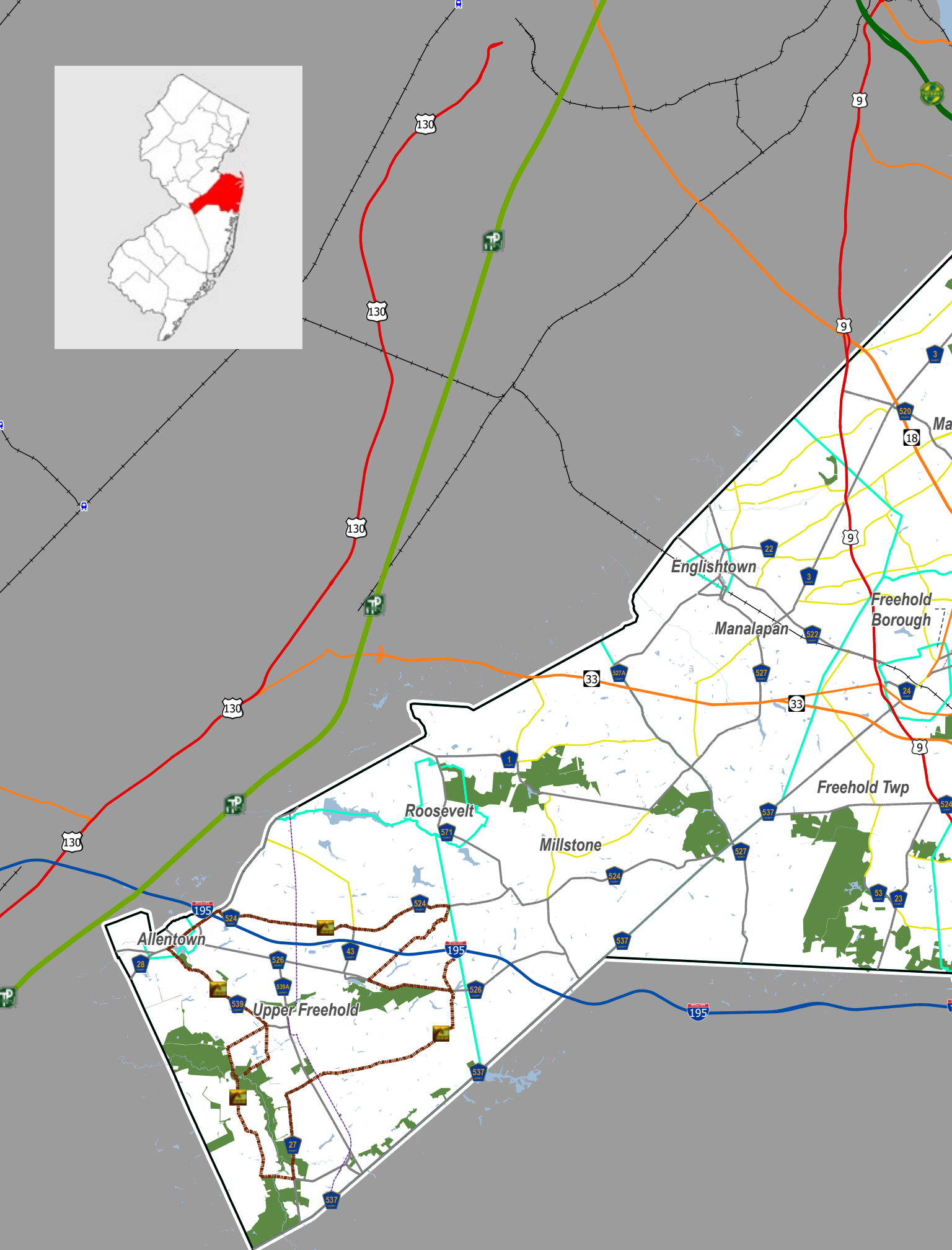
Atlantic City International Airport (ACY)
acairport.com

Monmouth Executive Airport (BLM)
monmouthjetcenter.com

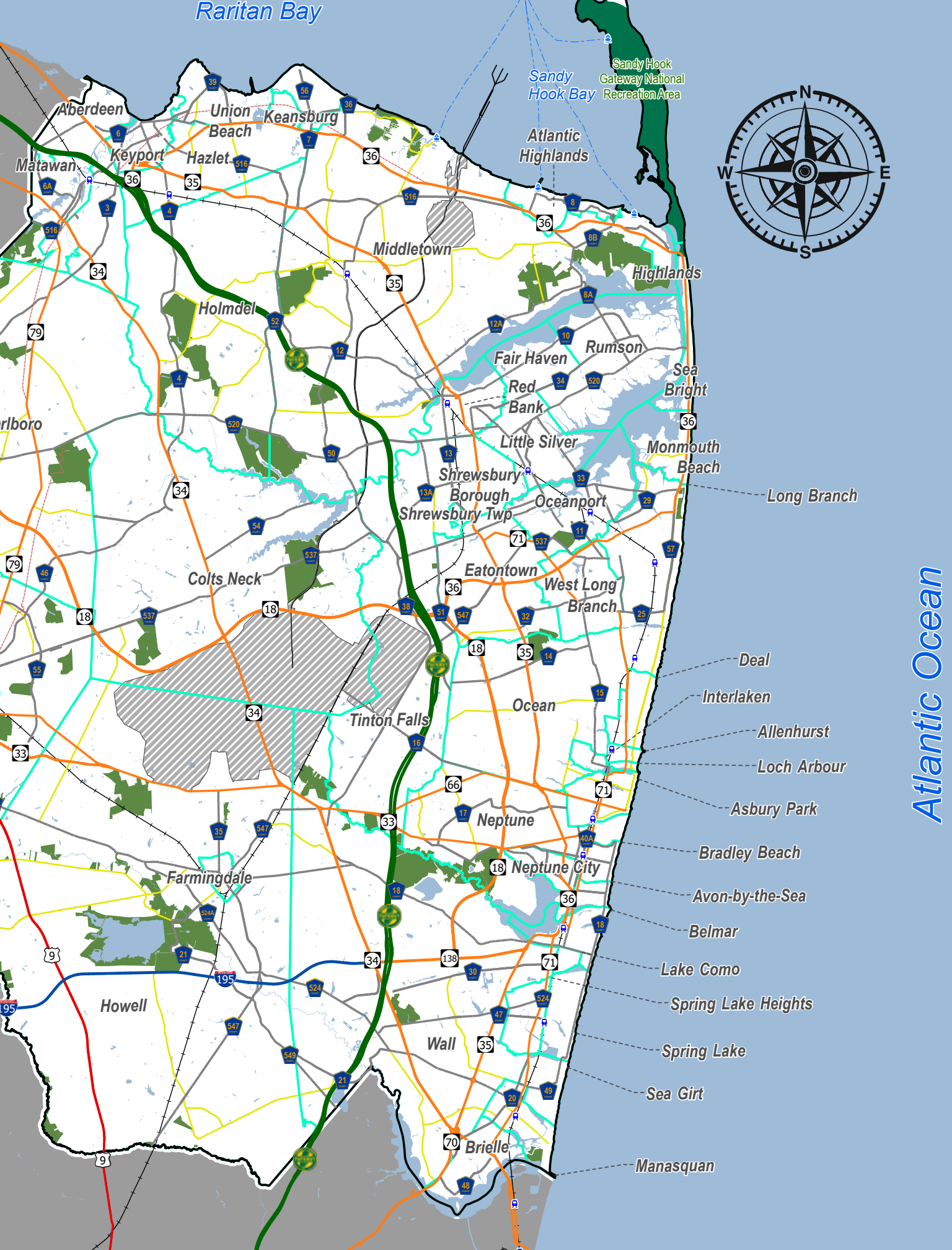
TRAVEL ASSISTANCE & MORE INFORMATION

Contact Monmouth County Tourism for travel planning assistance or more information.

MonmouthCountyTourism.com
800-523-2587



Raritan Bay



Atlantic Ocean

Sandy Hook Bay
Sandy Hook Gateway National Recreation Area

Atlantic Highlands

Highlands

Rumson

Sea Bright

Monmouth Beach

Long Branch

Deal

Interlaken

Allenhurst

Loch Arbour

Asbury Park

Bradley Beach

Avon-by-the-Sea

Belmar

Lake Como

Spring Lake Heights

Spring Lake

Sea Girt

Manasquan

Aberdeen

Union Beach
Keansburg

Keyport
Hazlet

Middletown

Holmdel

Fair Haven

Red Bank

Little Silver

Shrewsbury
Borough
Shrewsbury-Twp

Oceanport

Colts Neck

Eatontown

West Long Branch

Tinton Falls

Ocean

Neptune

Neptune City

Farmingdale

Howell

Wall

Brielle



Bell Works



Jersey Shore Outlets



Freehold Raceway Mall



The Grove

The Art of Shopping

Whether you consider it retail therapy, the perfect rainy-day activity, or just one of life's pleasures, if shopping is something you enjoy be prepared to be very entertained in Monmouth County. From designer boutiques to outlet malls, one-of-a-kind local artisans to world-famous brands, you can find just about anything in our downtowns and municipalities. With antique districts, flea markets, galleries, and shopping events year-round, shopping is an art with designs for every budget.

Shops, Malls & Lifestyle Centers

**FREEHOLD RACEWAY
MALL & AMC THEATER**
Freehold
FreeholdRacewayMall.com

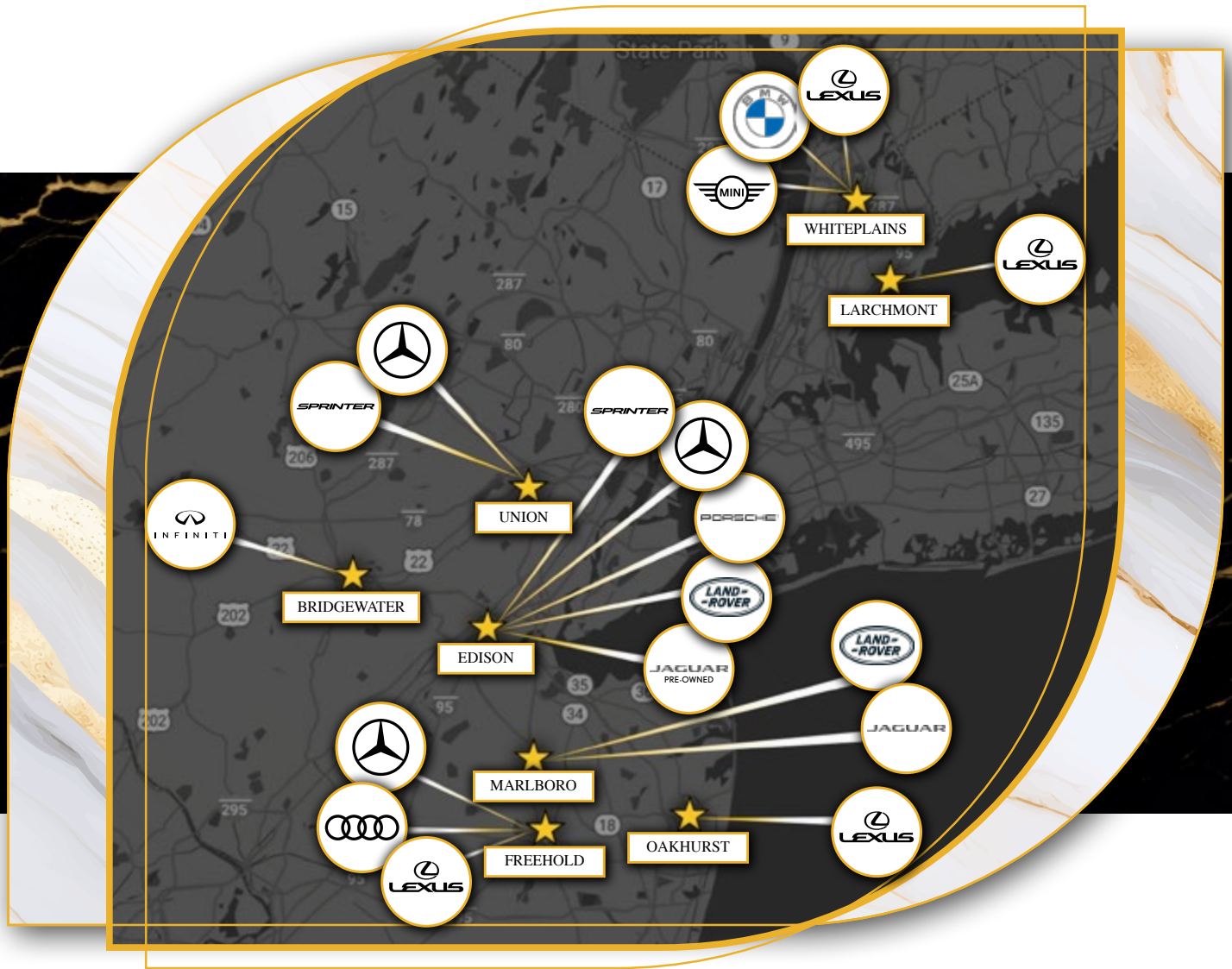
**THE GROVE AT
SHREWSBURY & THE
GROVE WEST**
Shrewsbury
TheGroveAtShrewsbury.com

BELL WORKS
Holmdel
BellWorks.com

**JERSEY SHORE
OUTLETS**
Tinton Falls
[PremiumOutlets.com/
outlet/jersey-shore](http://PremiumOutlets.com/outlet/jersey-shore)

PIER VILLAGE
Long Branch
PierVillage.com

**BROOK 35 PLAZA
& BROOK 35 WEST**
Sea Girt
Brook35Plaza.com



The Legend in Luxury.®
RayCatena.com

WHERE EVERY JOURNEY BEGINS.



Mercedes-Benz of Edison
 Mercedes-Benz of Union
 Ray Catena of Freehold

PORSCHE®

Porsche Edison



Ray Catena Audi
 Freehold

JAGUAR

Jaguar Marlboro



Ray Catena Lexus of Monmouth
 Ray Catena Lexus of Freehold
 Ray Catena Lexus of Larchmont
 Ray Catena Lexus of White Plains



INFINITI
 Ray Catena INFINITI
 of Bridgewater

SPRINTER

Ray Catena Sprinter Edison
 Ray Catena Sprinter Union



Land Rover Edison
 Land Rover Marlboro



Ray Catena BMW
 of Westchester



Ray Catena MINI
 of Westchester

1-800-New-Auto



Monmouth County

Where New Jersey's Garden State charm blooms in every corner.

Your perfect escape into nature starts here!

MonmouthCountyTourism.com

Deep Cut Gardens, Middletown, NJ
Photo Credit: Sophia Chubatyy